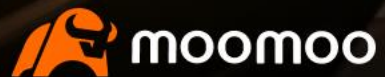


MooCreator Day 2026

Make Mooves. Make Gains.



Why is Trading so hard?



Limited Capital



Wrong Direction



Holding & Waiting



Limited Capital

Leverage

Control RM 80k assets with just RM 2k



Wrong Direction

Insurance

Profit even when the market crashes



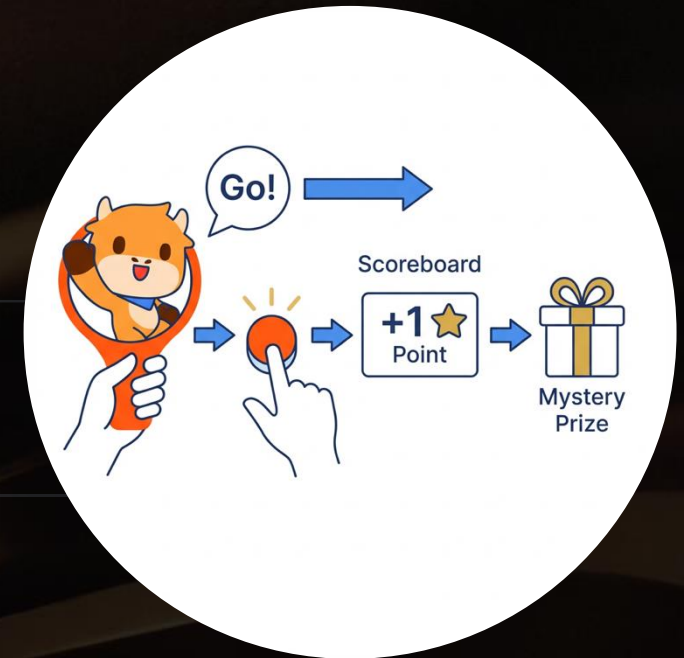
Holding & Waiting

Income

Get paid while you wait

Content

- 01 The Power of Options
- 02 4 Moves to Master Options
- 03 Real-World Practice with moomoo



Content

01 The Power of Options

02 4 Moves to Master Options

03 Real-World Practice with moomoo

The Power of Options

High Returns with Small Capital (Leverage)

Scenario A: The Bullish Bet (Leverage)

Imagine you love Tesla. It's trading at \$430. You think it's going up next week.



Tools	Stock	Option
Plan	Buy 100 Shares of TSLA at \$430	Buy 1 Call Contract (Strike \$430; Expires in 2 weeks)
Cost	\$43,000	\$1,920 (Premium)
Risk	\$43,000	\$1,920 (Max Loss)
If TSLA Goes to \$500	+\$7,000 (16% ROI)	+\$4,340 (226%)

Data as of 26 Jun.

Estimated by moomoo Option calculator: Simulate the stock price rising to \$500 in the first week passed

The Power of Options

Hedge against risks from your holdings (Insurance)

Scenario B: The Market Crash (Hedging)

You own \$25,000 worth of AAPL stocks. You are worried about the upcoming Earnings Report.



Tools	Stock	Option
Action	Hold 100 shares still at \$250	Buy 1 Put Option (Strike \$250; Expires in 2 weeks)
Cost	\$25,000	\$509 (Premium)
AAPL Earning miss, price down 10%	-\$2,500	Stock: -\$2,500 Option: +\$2491 (3000-509) Total -\$9

Data as of 26 Jun.

Estimated by moomoo Option calculator: Simulate the stock price down to 10% in the first week passed

The Power of Options

Earn Cash from your holdings (Income)

Scenario C: The Sideways Market (Income)

You own 100 shares of Nvidia.
Price is \$186. It's been flat for 2 weeks.



Tools	Stock	Option
Action	Hold 100 Shares of NVDA at \$186	Sell 1 Call Option (Strike \$195; Expires in 2 weeks)
NVDA Goes to \$193 in 2 weeks	\$600	Stock: +\$600 Option: +\$176
NVDA Still at \$186 in 2 weeks	0	+\$176

What Exactly IS an Option?

Call option

[INTC] [260206] [45.00] [C] [1.30]



Underlying stock

The Stock to be exchanged if the option is exercised



Expiration Date

The date on which an option expires



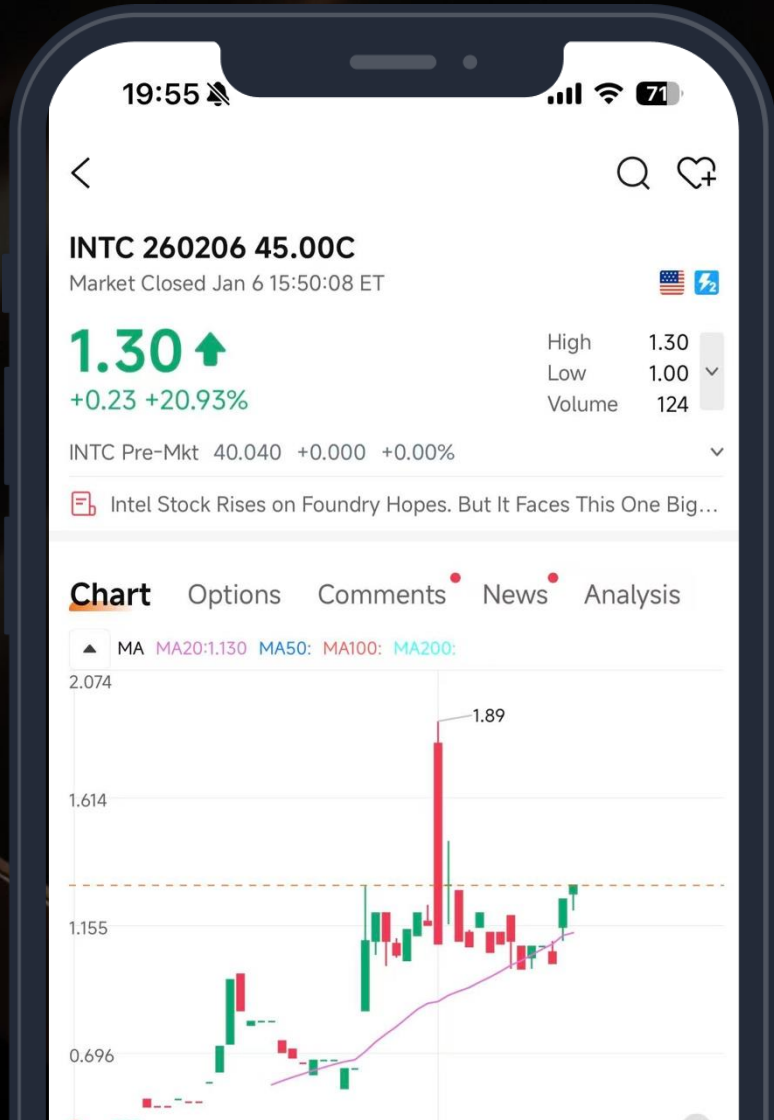
Strike Price

The pre-determined price at which the underlying stock can be bought or sold



Premium

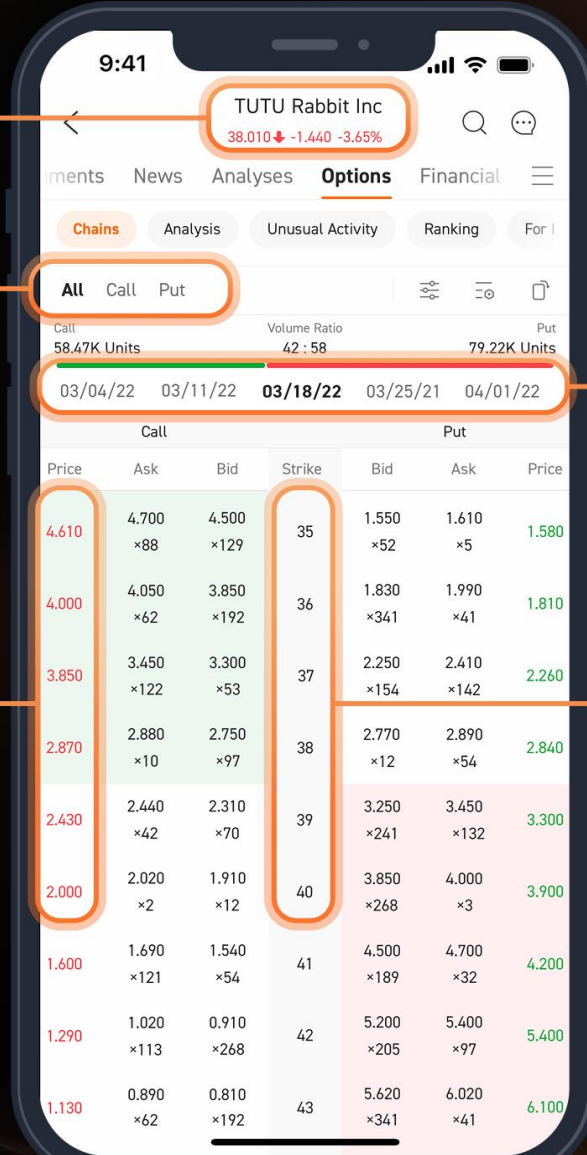
The market price of an option contract, which is determined by expiration date and implied volatility



Underlying stock

Option type

Premium



9:41

TUTU Rabbit Inc
38.010 ↓ -1.440 -3.65%

Options

Chains Analysis Unusual Activity Ranking For I

All Call Put

Call 58.47K Units Volume Ratio 42 : 58 Put 79.22K Units

03/04/22 03/11/22 03/18/22 03/25/21 04/01/22

	Call			Put			
	Price	Ask	Bid	Strike	Bid	Ask	Price
	4.610	4.700 ×88	4.500 ×129	35	1.550 ×52	1.610 ×5	1.580
	4.000	4.050 ×62	3.850 ×192	36	1.830 ×341	1.990 ×41	1.810
	3.850	3.450 ×122	3.300 ×53	37	2.250 ×154	2.410 ×142	2.260
	2.870	2.880 ×10	2.750 ×97	38	2.770 ×12	2.890 ×54	2.840
	2.430	2.440 ×42	2.310 ×70	39	3.250 ×241	3.450 ×132	3.300
	2.000	2.020 ×2	1.910 ×12	40	3.850 ×268	4.000 ×3	3.900
	1.600	1.690 ×121	1.540 ×54	41	4.500 ×189	4.700 ×32	4.200
	1.290	1.020 ×113	0.910 ×268	42	5.200 ×205	5.400 ×97	5.400
	1.130	0.890 ×62	0.810 ×192	43	5.620 ×341	6.020 ×41	6.100

Expiration date

Strike price

Options

The right to Trade
an asset

(Underlying Stock)

at a specific price (Strike
Price)

at a certain time (
Expiration date)



One pays, one collects.
One chooses, one obeys.



1. Action: 💰 Pays Premium (Debit)
2. Power: Has the RIGHT to exercise.
3. Mindset: "I want control / leverage."
4. Risk: Limited (Only lose what you paid).
5. Analogy: The Insurance Buyer.

1. Action: 💰 Collects Premium (Credit)
2. Burden: Has the OBLIGATION to fulfill.
3. Mindset: "I want income / probability."
4. Risk: High / Undefined (Must perform if assigned).
5. Analogy: The Insurance Company (The House).



long



- Definition: The right to BUY shares.
- Market View: Generally Bullish (Expect price to go UP).



- Definition: The right to SELL shares.
- Market View: Generally Bearish (Expect price to go DOWN).



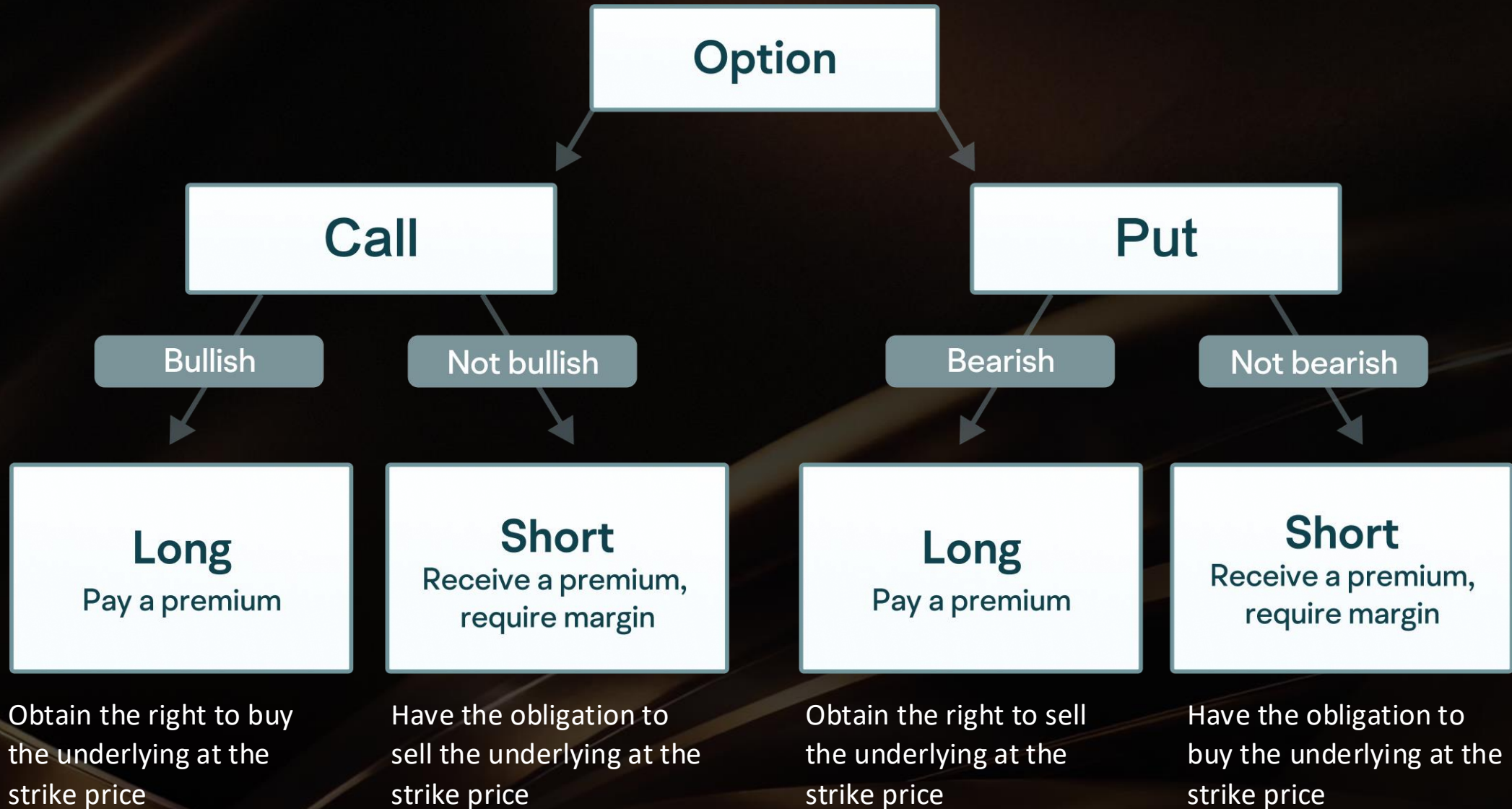
Short



- **Definition:** The Obligation to SELL shares (if assigned).
- **Market View:** Bearish to Neutral (Expect price to NOT go UP).



- **Definition:** The Obligation to BUY shares (if assigned)
- **Market View:** Bullish to Neutral (Expect price to NOT go DOWN).



Round 1 Challenge Questions

Task 1. [Single Choice] Regarding the main functions of options, which of the following descriptions is INCORRECT?

- A. Leverage: Allows investors to control a larger value of assets with less capital, achieving high returns with a small investment.
- B. Hedging: Acts like insurance for stocks, protecting portfolio value during market downturns.
- C. Obligation: The Option Buyer must exercise their right on the expiration date and cannot choose to abandon it.
- D. Income: By selling options (e.g., Covered Calls), investors can collect premiums while holding the underlying stock.

Correct Answer

C

Options grant the buyer the "Right" but not the "Obligation." The buyer can choose to exercise the option or let it expire worthless. Only the Option Seller faces the obligation to fulfill the contract if assigned.

Round 1 Challenge Questions

Task 2. [Single Choice] Assume Tesla (TSLA) is currently trading at \$200. You believe a big move is coming next week.

- Plan A: Buy 100 shares of stock. Cost: \$20,000.
- Plan B: Buy 1 Call Option (Strike \$200). Premium: \$5.00. Cost: \$500.
- Result: One week later, TSLA rises to \$220 (a 10% increase).
- Question: Excluding fees, the Return on Investment (ROI) of Plan B (Option) is approximately how many times that of Plan A (Stock)?

- A. 1x
- B. 5x
- C. 10x
- D. 30x

Correct Answer

D

- Stock ROI: $(\$220 - \$200) / \$200 = 10\%$.
- Option ROI: The intrinsic value becomes \$20. Profit = $(\$20 - \$5) * 100 = \$1,500$.
ROI = $\$1,500 / \$500 = 300\%$.
- Comparison: $300\% / 10\% = 30$ times. (Note: This demonstrates how options amplify capital efficiency.)

Round 1 Challenge Questions

Task 2. [Single Choice] As an options beginner, which of the following statements about elements and risks is TRUE?

- A. A "Call" is a bearish option, and a "Put" is a bullish option.
- B. As an Option Buyer, my maximum potential loss is unlimited.
- C. The four key elements of an option are: Underlying Asset, Strike Price, Expiration Date, and Premium.
- D. As an Option seller, i can have unlimited gain.

Correct Answer

C

- A is wrong: Call = Bullish, Put = Bearish.
- B is wrong: A Buyer's max loss is limited to the Premium paid. (Sellers face unlimited risk).
- D is wrong: As a Option sell, my max profit is the preimum.

Content

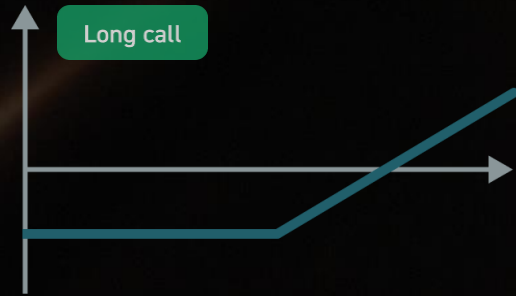
01 The Power of Options

02 4 Moves to Master Options

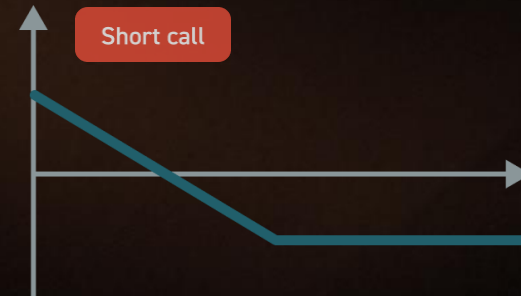
03 Real-World Practice with moomoo

04 Exclusive Rewards for moomoo Partners

The 4 Fundamental Strategies

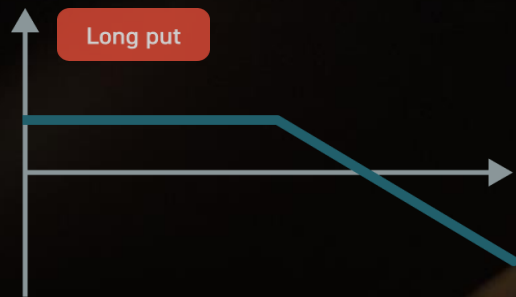


- View: **Bullish** 🐮 (Super Bullish)
- Action: Pay Premium.
- Goal: Profit from price rising.

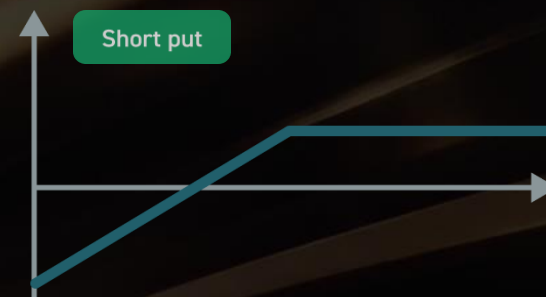


- View: **Bearish / Neutral** 🐻
- Action: Collect Income.
- Goal: Price stays below strike (Be the casino).

Mastering these 4 blocks allows you to build any complex strategy.



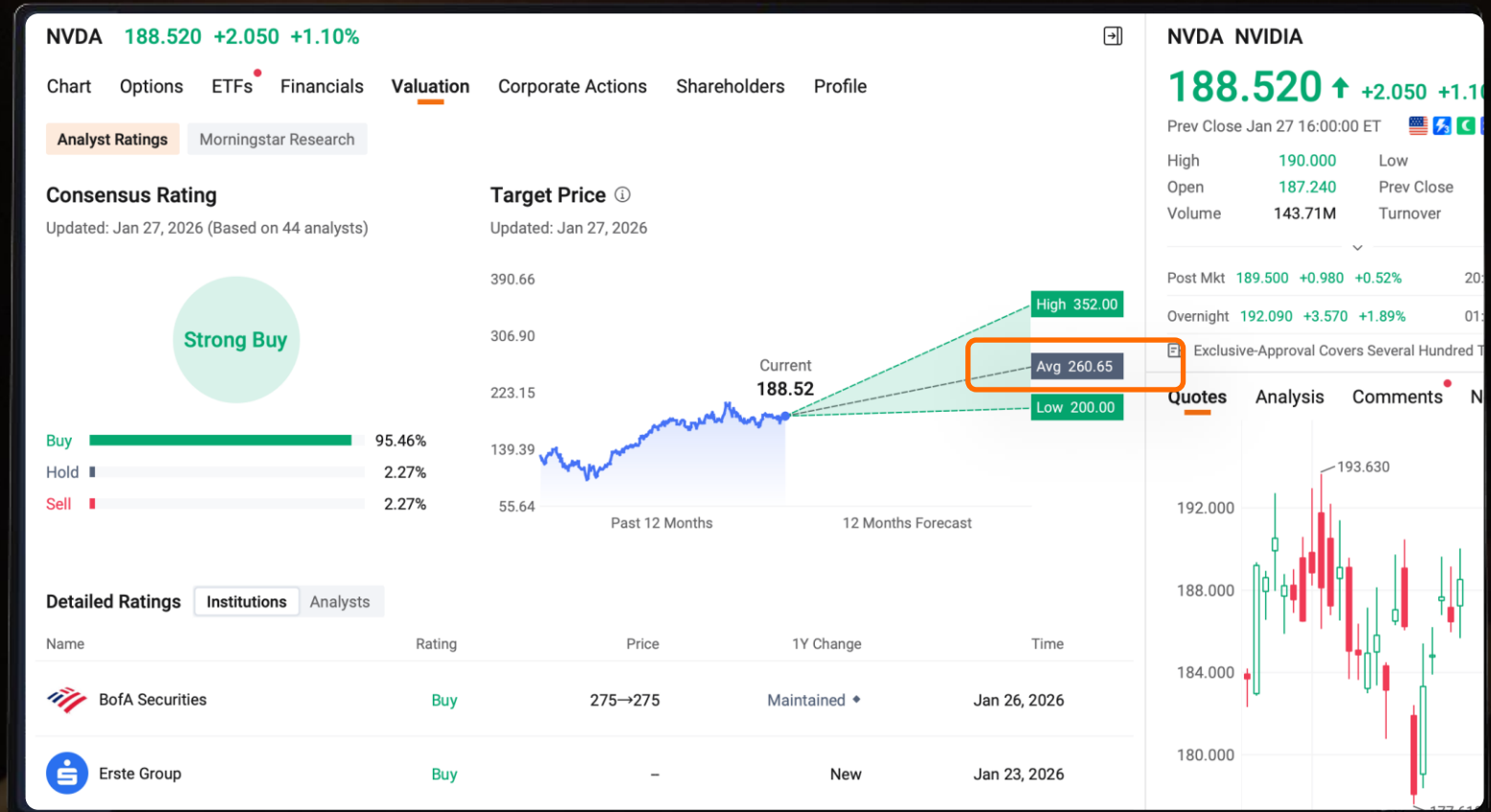
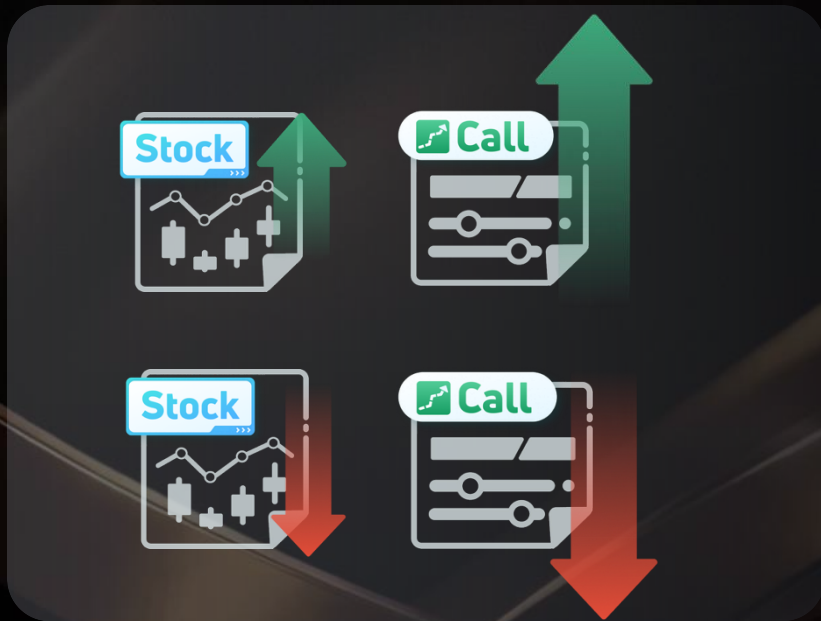
- View: **Bearish** 🐻 (Super Bearish)
- Action: Pay Premium.
- Goal: Profit from price crashing.



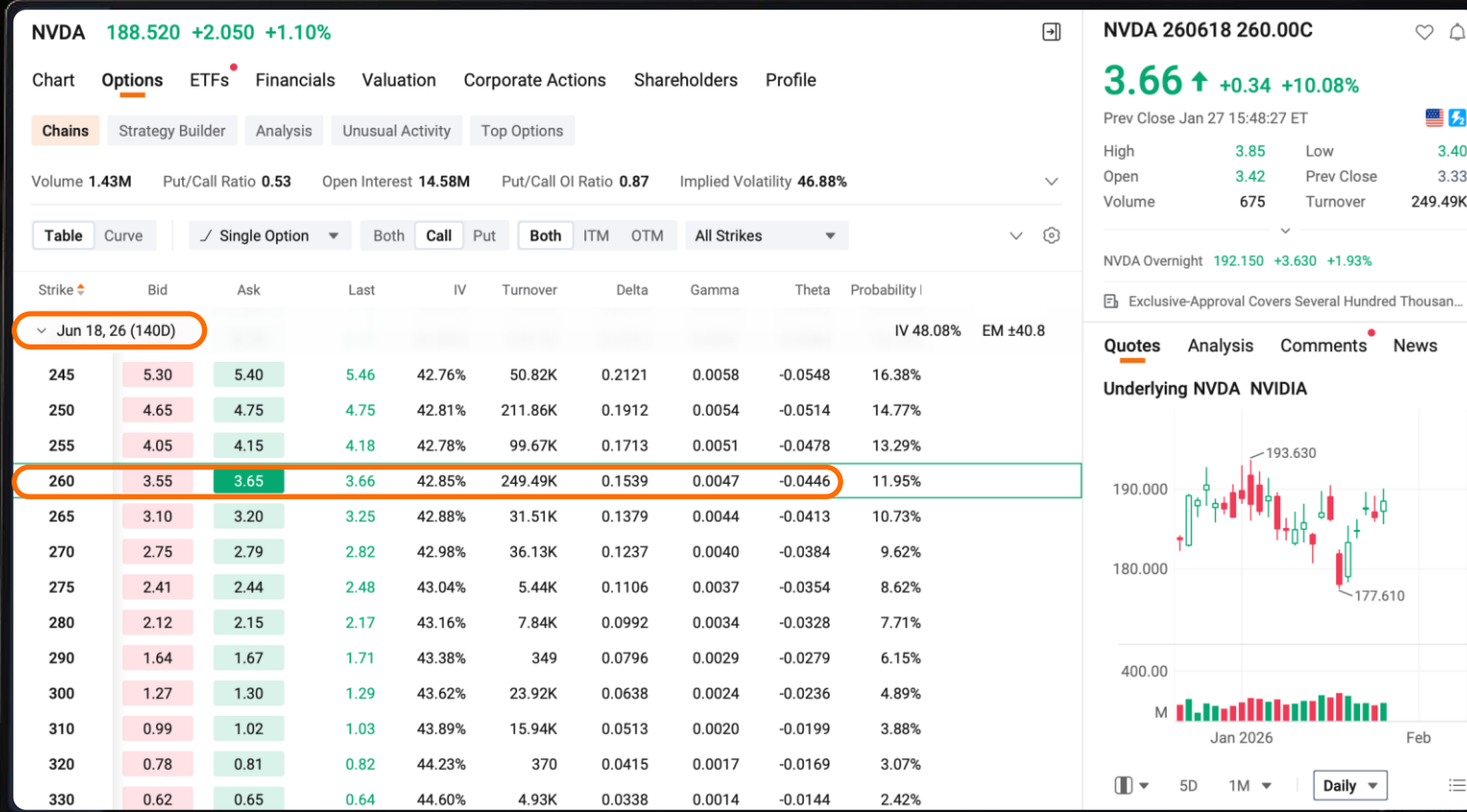
- View: **Bullish / Neutral** 🐮
- Action: Collect Income.
- Goal: Price stays above strike (or buy stock cheap).

Long Call

- View: **Bullish** 🐮 (Super Bullish)
- Action: Pay Premium.
- Goal: Profit from price rising.



Data as of 27 Jun.



Data as of 27 Jun.

Buying the call [NVDA 260618 260 C] costs:

\$3.65 * 100 = \$365

Stock Price at Expiration	Option Value	Net Profit / Loss
\$280	\$2000	+\$1635 \$2000-\$365
Below \$260	\$0.00	-\$365 (Premium)
\$260 (Strike)	\$0.00	-\$365 (Premium)
\$263.65 (Breakeven)	\$365	\$0.00



Data as of 27 Jun.

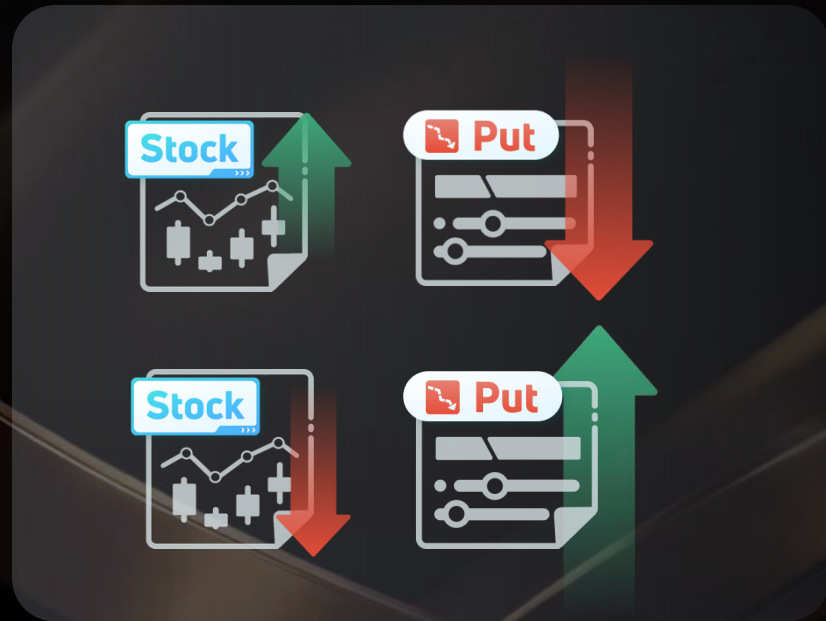
Buying the call [NVDA 260618 260 C] costs:

\$3.65 * 100 = \$365

Stock Price at Expiration	Option Value	Net Profit / Loss
\$280	\$2000	+\$1635 \$2000-\$365
Below \$260	\$0.00	-\$365 (Premium)
\$260 (Strike)	\$0.00	-\$365 (Premium)
\$263.65 (Breakeven)	\$365	\$0.00

Long Put

- View: Bearish 🐻 (Super Bearish)
- Action: Pay Premium.
- Goal: Profit from price crashing.



Data as of 27 Jun.

NVDA 188.520 +2.050 +1.10%

Chart Options ETFs Financials Valuation Corporate Actions Shareholders Profile

Chains Strategy Builder Analysis Unusual Activity Top Options

Volume 1.43M Put/Call Ratio 0.53 Open Interest 14.58M Put/Call OI Ratio 0.87 Implied Volatility 46.88% Historical Volatility 25.65% IV Rank 20 IV Percentile 47%

Table Curve Single Option Both Call Put Both ITM OTM All Strikes All Expirations

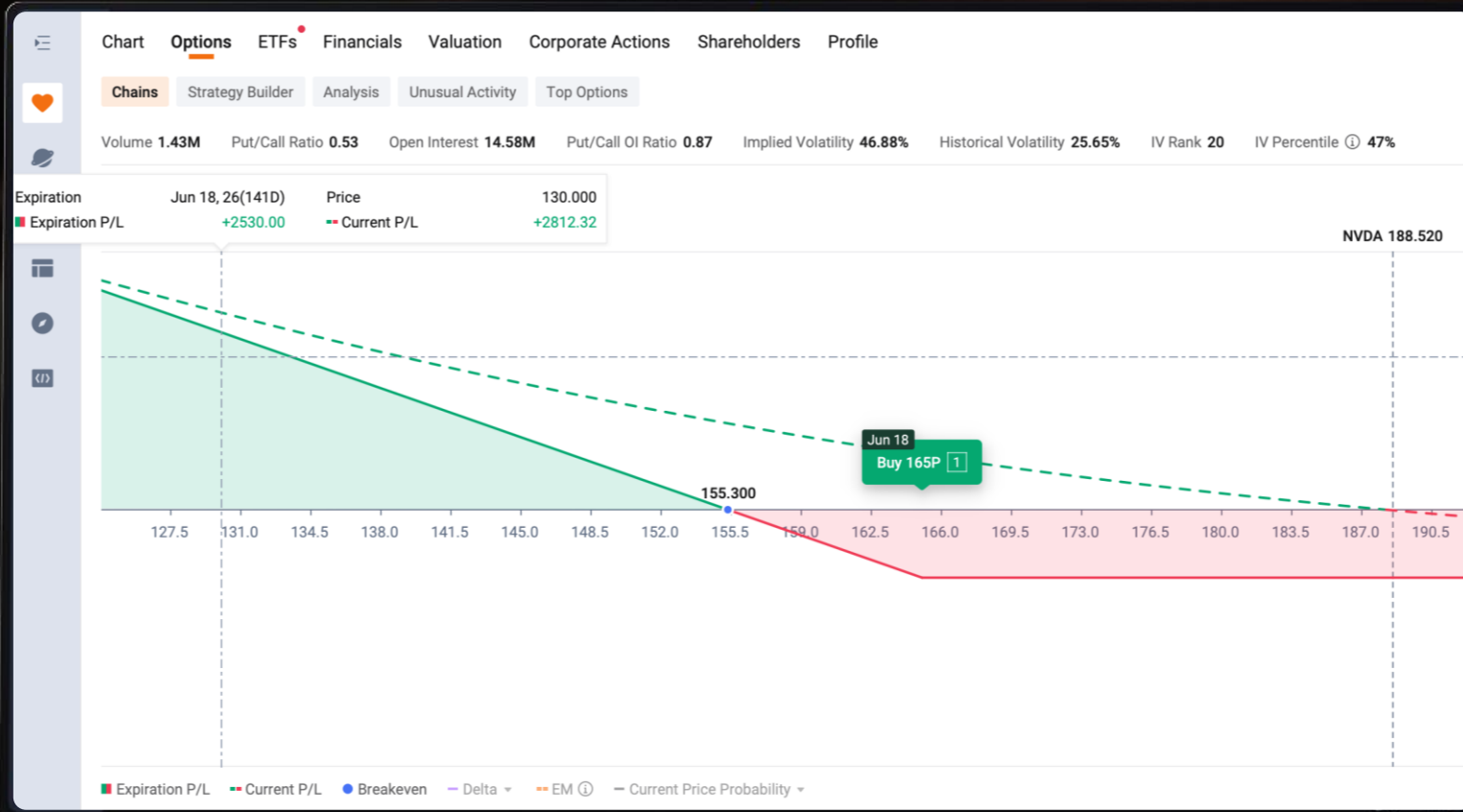
Strike	Bid	Ask	Last	IV	Turnover	Delta	Gamma	Theta	Probability
Jun 18, 26 (140D)									IV 48.08%
160	8.15	8.25	8.12	46.33%	165.84K	-0.2252	0.0055	-0.0535	32.85%
162	8.75	8.80	8.45	46.12%	25.85K	-0.2378	0.0057	-0.0548	34.36%
164	9.30	9.40	9.05	45.85%	17.38K	-0.2506	0.0059	-0.0558	35.88%
165	9.65	9.75	9.60	45.85%	134.12K	-0.2575	0.0060	-0.0566	36.64%
166	9.95	10.05	9.85	45.70%	17.46K	-0.2640	0.0061	-0.0571	37.40%
167	10.25	10.35	10.15	45.54%	11.09K	-0.2706	0.0062	-0.0575	38.17%
168	10.60	10.70	10.37	45.48%	5.16K	-0.2776	0.0063	-0.0581	38.93%
169	10.95	11.05	10.65	45.41%	16.12K	-0.2845	0.0064	-0.0586	39.69%
170	11.30	11.40	11.25	45.32%	898.4K	-0.2915	0.0065	-0.0591	40.45%
171	11.65	11.75	11.35	45.21%	10.24K	-0.2985	0.0066	-0.0595	41.21%
172	12.00	12.10	11.85	45.09%	21.21K	-0.3056	0.0067	-0.0599	41.97%

Data as of 27 Jun.

Buying the Put [NVDA 260618 165 P] Costs:

\$9.75 * 100 = \$975

Stock Price at Expiration	Option Value	Net Profit / Loss
\$130	\$35	+\$2525 +3500-975
Above \$165	\$0	-\$975
\$165 (Strike)	\$0	-\$975 (Premium)
\$153.85 (Breakeven)	\$11	\$0 (Premium)



Data as of 27 Jun.

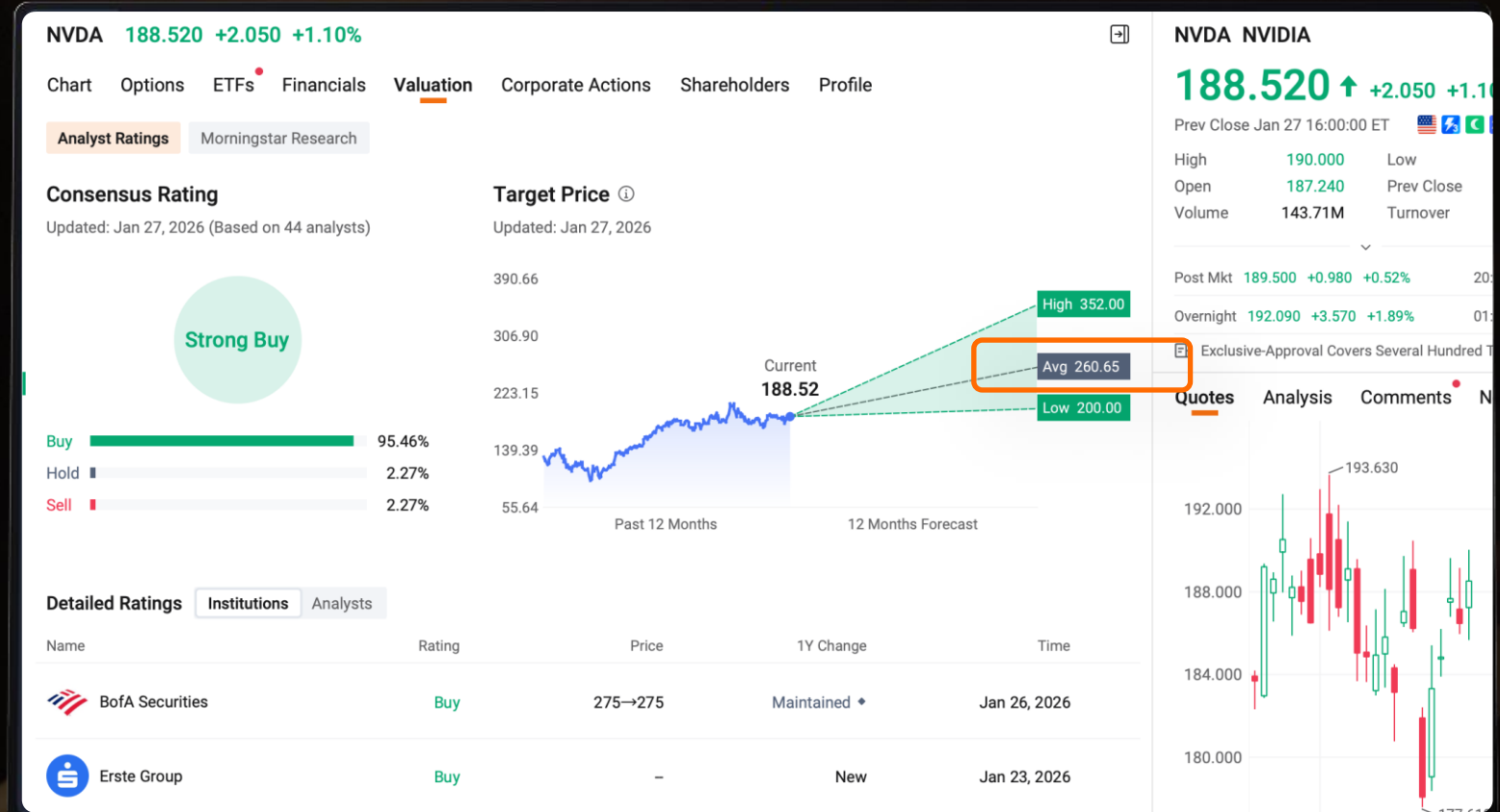
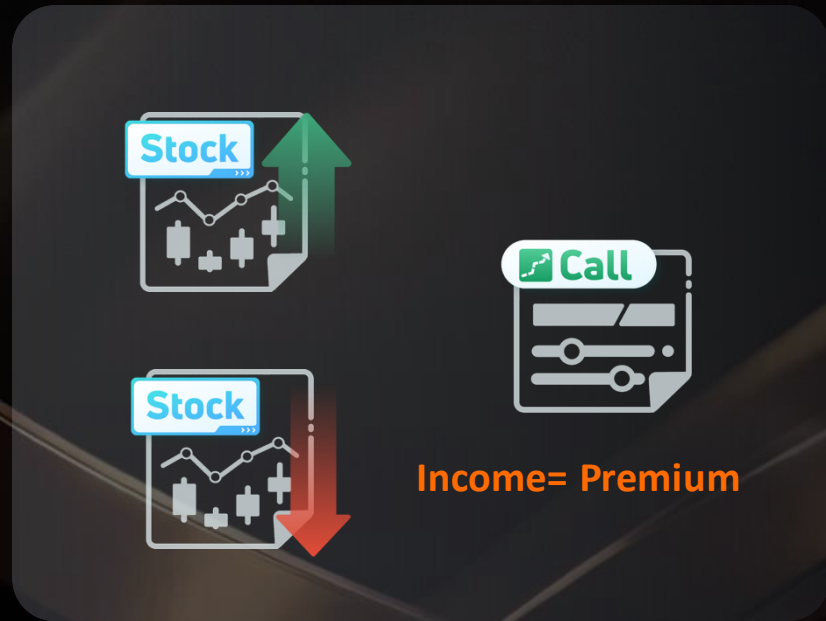
Buying the Put [NVDA 260618 165 P] Costs:

\$9.75 * 100 = \$975

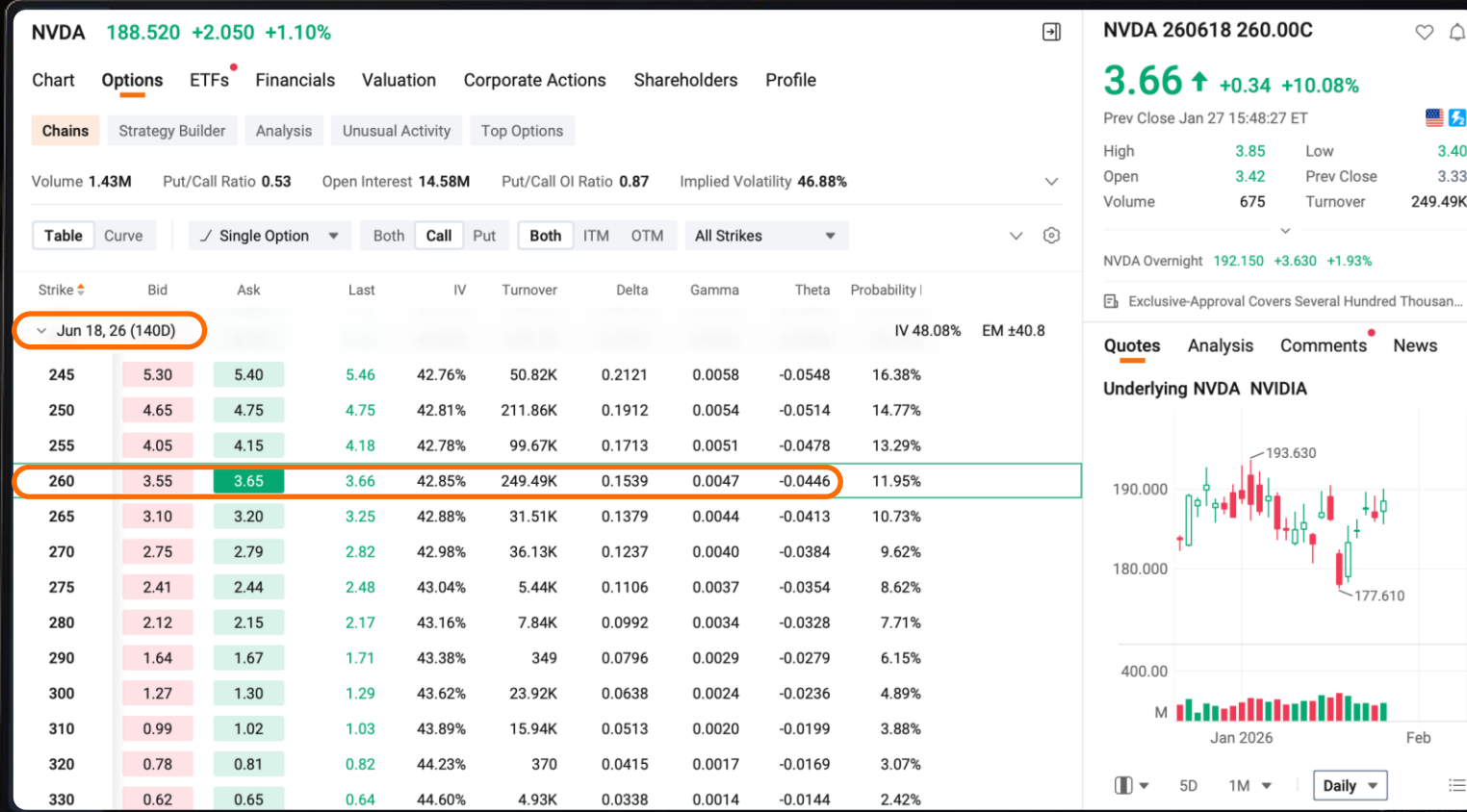
Stock Price at Expiration	Option Value	Net Profit / Loss
\$130	\$35	+\$2525 +3500-975
Above \$165	\$0	-\$975
\$165 (Strike)	\$0	-\$975 (Premium)
\$155.25 (Breakeven)	\$9.75	\$0 (Premium)

Short Call

- View: Bearish / Neutral 🐢
- Action: Collect Income.
- Goal: Price stays below strike (Be the casino)



Data as of 27 Jun.



Data as of 27 Jun.

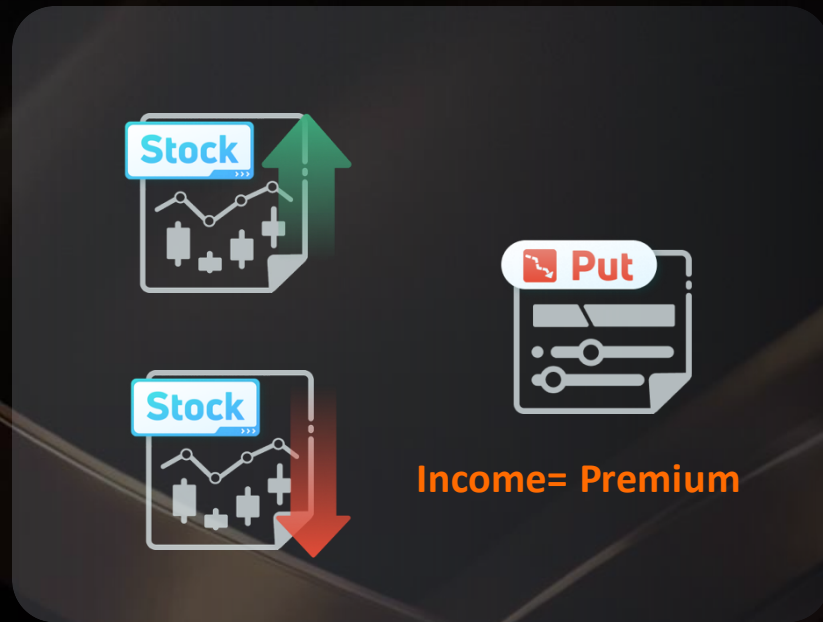
Buying the call [NVDA 260618 260 C] costs:

\$3.65 * 100 = \$365

Stock Price at Expiration	Option Value	Net Profit / Loss
\$280	\$2000	-\$1635 \$2000-\$365
Below \$260	\$0.00	+\$365 (Premium)
\$260 (Strike)	\$0.00	+\$365 (Premium)
\$263.65 (Breakeven)	\$365	\$0.00

Short Put

- View: Bullish / Neutral 🐮
- Action: Collect Income.
- Goal: Price stays above strike (or buy stock cheap).



Data as of 27 Jun.

NVDA 188.520 +2.050 +1.10%

Chart Options ETFs Financials Valuation Corporate Actions Shareholders Profile

Chains Strategy Builder Analysis Unusual Activity Top Options

Volume 1.43M Put/Call Ratio 0.53 Open Interest 14.58M Put/Call OI Ratio 0.87 Implied Volatility 46.88% Historical Volatility 25.65% IV Rank 20 IV Percentile 47%

Table Curve Single Option Both Call Put Both ITM OTM All Strikes All Expirations

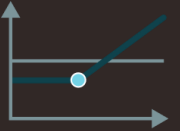


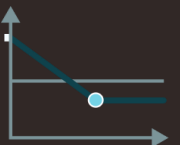
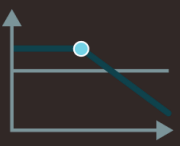
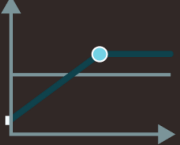
Strike	Bid	Ask	Last	IV	Turnover	Delta	Gamma	Theta	Probability
Jun 18, 26 (140D)									IV 48.08%
160	8.15	8.25	8.12	46.33%	165.84K	-0.2252	0.0055	-0.0535	32.85%
162	8.75	8.80	8.45	46.12%	25.85K	-0.2378	0.0057	-0.0548	34.36%
164	9.30	9.40	9.05	45.85%	17.38K	-0.2506	0.0059	-0.0558	35.88%
165	9.65	9.75	9.60	45.85%	134.12K	-0.2575	0.0060	-0.0566	36.64%
166	9.95	10.05	9.85	45.70%	17.46K	-0.2640	0.0061	-0.0571	37.40%
167	10.25	10.35	10.15	45.54%	11.09K	-0.2706	0.0062	-0.0575	38.17%
168	10.60	10.70	10.37	45.48%	5.16K	-0.2776	0.0063	-0.0581	38.93%
169	10.95	11.05	10.65	45.41%	16.12K	-0.2845	0.0064	-0.0586	39.69%
170	11.30	11.40	11.25	45.32%	898.4K	-0.2915	0.0065	-0.0591	40.45%
171	11.65	11.75	11.35	45.21%	10.24K	-0.2985	0.0066	-0.0595	41.21%
172	12.00	12.10	11.85	45.09%	21.21K	-0.3056	0.0067	-0.0599	41.97%

Data as of 27 Jun.

Buying the Put [NVDA 260618 165 P] Costs:

\$9.75 * 100 = \$975

Stock Price at Expiration	Option Value	Net Profit / Loss
\$130	\$35	-\$2525 -3500+975
Above \$165	\$0	+\$975
\$165 (Strike)	\$0	+\$975 (Premium)
\$155.25 (Breakeven)	\$9.75	\$0 (Premium)

Strategy	Gain & Loss	Decisions to consider	Time decay	Advantages & Disadvantages
Long Call 	<ul style="list-style-type: none"> Unlimited theoretical potential profit Limited theoretical potential loss 	<ol style="list-style-type: none"> Not expect the option to become worthless Prefer to selling the option to exercising it if it still has a time value The selling time: away from the expiration date or when the underlying price arrives at the stop-loss level 	Negative Effects	<div style="text-align: center;">  Higher leverage, undertaking limited risk to gain large or unlimited theoretical potential profit. </div> <div style="text-align: center; margin-top: 20px;">  100% loss of the initial investment if judging wrongly. Profit may be greatly reduced if ignoring the time value's decay, even if the judgment is right. </div>
Long Put 	<ul style="list-style-type: none"> Large theoretical potential profit Limited theoretical potential loss 			
Short Call 	<ul style="list-style-type: none"> Limited theoretical potential profit Unlimited theoretical potential loss 	<ol style="list-style-type: none"> Expect the option to become worthless Not expect the option to be exercised Perhaps buy the same option to close the position and stop loss if judging wrongly 	Positive Effects	Generate income if operating correctly. Aggressive strategy. Manage the risk: investors who hold the underlying and aim to sell it for X dollars sells its call with a strike price of X dollars.
Short Put 	<ul style="list-style-type: none"> Limited theoretical potential profit Large theoretical potential loss 			

Round 2 Challenge Questions

Task 4. the scenario and quickly identify the best strategy: Buy Call / Sell Call / Buy Put / Sell Put.

- Q1: "I am bullish on Nvidia (NVDA) for next month's earnings. I have limited capital but want to use leverage to aim for high returns."
- Q2: "I own 100 shares of Apple (AAPL) and plan to hold long-term. However, I think the price will remain sideways this month. I want to earn some extra 'rent' to lower my cost basis."
- Q3: "The Fed is releasing a decision in March 2026, and I'm worried the market might crash. I want to buy 'insurance' for my portfolio."

Correct Answer

Q1

- Answer: Buy Call
- Reasoning: Bullish view + Leverage needed + Limited Risk (Premium).

Q2

- Answer: Sell Call (Covered Call)
- Reasoning: Holding stock + Neutral view + Income generation.

Q3

- Answer: Buy Put
- Reasoning: Hedging against downside risk.

Round 2 Challenge Questions

Task 5. Assume today is January 18, 2026. Each group draws one strategy from today's 4 strategies. You have 5 minutes to discuss how to trade TSLA.

- Discussion Points (for the representative):
 - View: Are we Bullish, Bearish, or Neutral?
 - Strike Selection: ITM (In-the-Money), ATM, or OTM (Out-of-the-Money)? Why? (e.g., OTM for leverage, ITM for safety).
 - Expiration: Short-term (Weekly) for speculation vs. Long-term (LEAPS) for investment.

Content

01 The Power of Options

02 4 Moves to Master Options

03 Real-World Practice with moomoo



Malaysia's First Licensed Broker for US Options

<p>Decide with clarity</p>	<ul style="list-style-type: none"> Options Chain P/L Analysis 	<p>Find the right contract at a single glance Instant P&L breakdown for every contract</p>
<p>Trade with ease</p>	<ul style="list-style-type: none"> Option Strategy Option Calculator Moomoo AI 	<p>Build pro strategies with zero experience Calculate P/L first for a more confident trade Lost in Options? Let Moomoo AI Assist You</p>
<p>Trade Smart</p>	<ul style="list-style-type: none"> 13 Combined Margin Options Strategies Advanced Order Types Desktop Version 	<p>13 pro Options strategies at your fingertips Set trigger conditions for auto trading Multi-terminal Sync & Customizable Layouts</p>
<p>Save More</p>	<ul style="list-style-type: none"> 0 commission* Option Trading Free Lv2 Quote 	<p>Trade Options at \$0.45 for each contract Free BBO and 20-level depth quotes</p>



Policy Announcement:

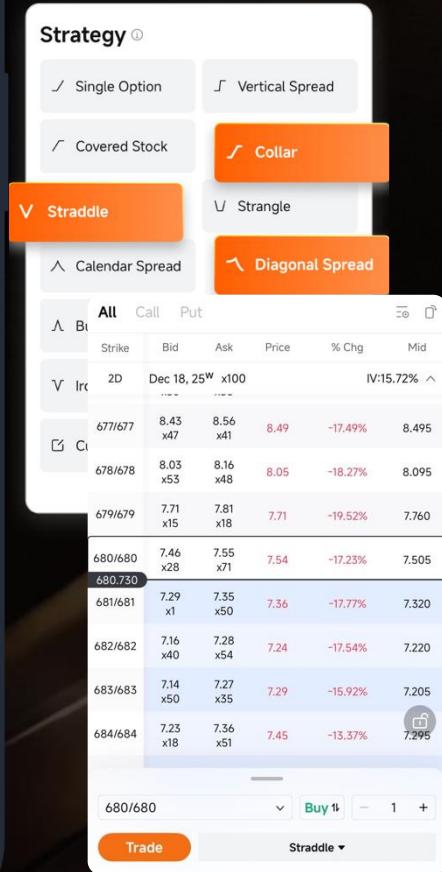
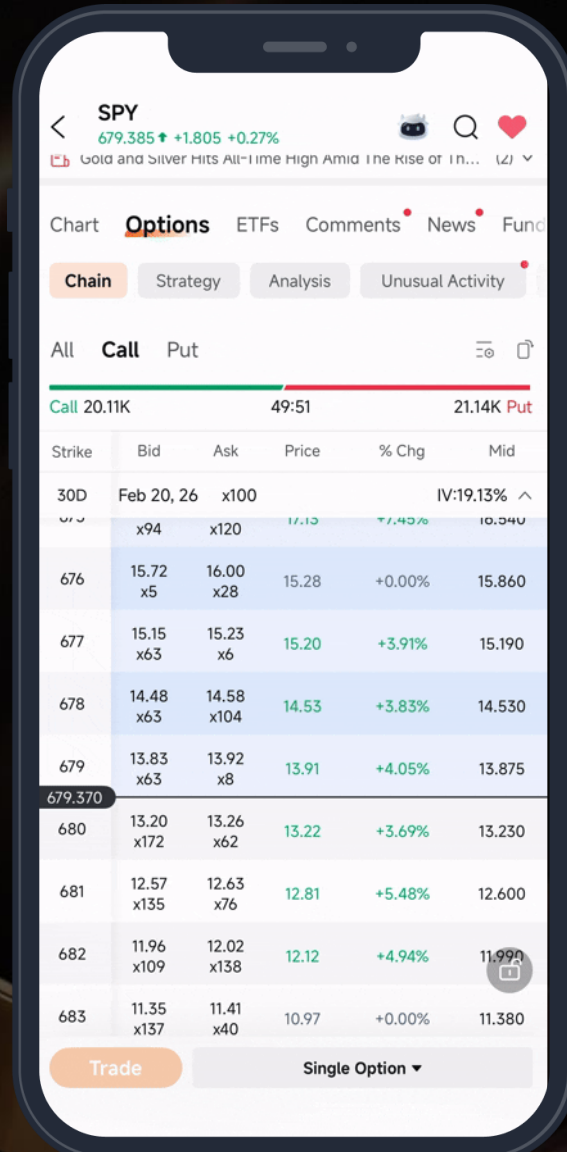
1. Global 0% tariff policy
2. \$1,000 U.S. stock investment account for every individual worldwide

Market Expectation:

Substantial upward momentum for the S&P 500

Decide with Clarity

From confusion to precise decision-making



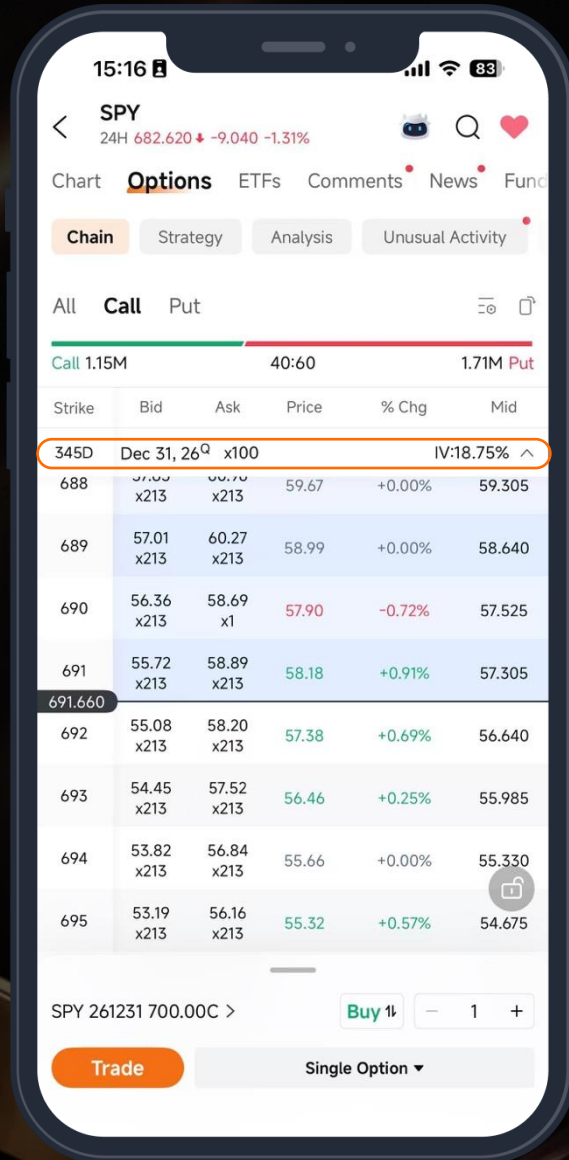
Free Real-Time Options Chains

Find the right contract at a single glance

- View contracts across various expiration dates and strike prices on a single interface.
- Specify an options strategy (13 strategies based on Margin) to directly access the strategy contract
- Support custom display of 20+ key fields. (e.g., Greeks, implied volatility) Quickly sort and filter to instantly find your target contract

Options > Chain Tab

This slide needs to be demo
with moomoo App 📱

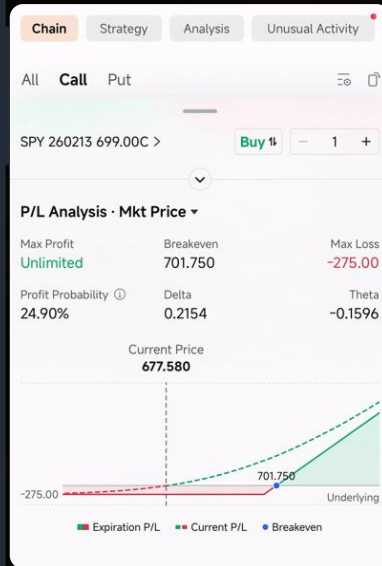
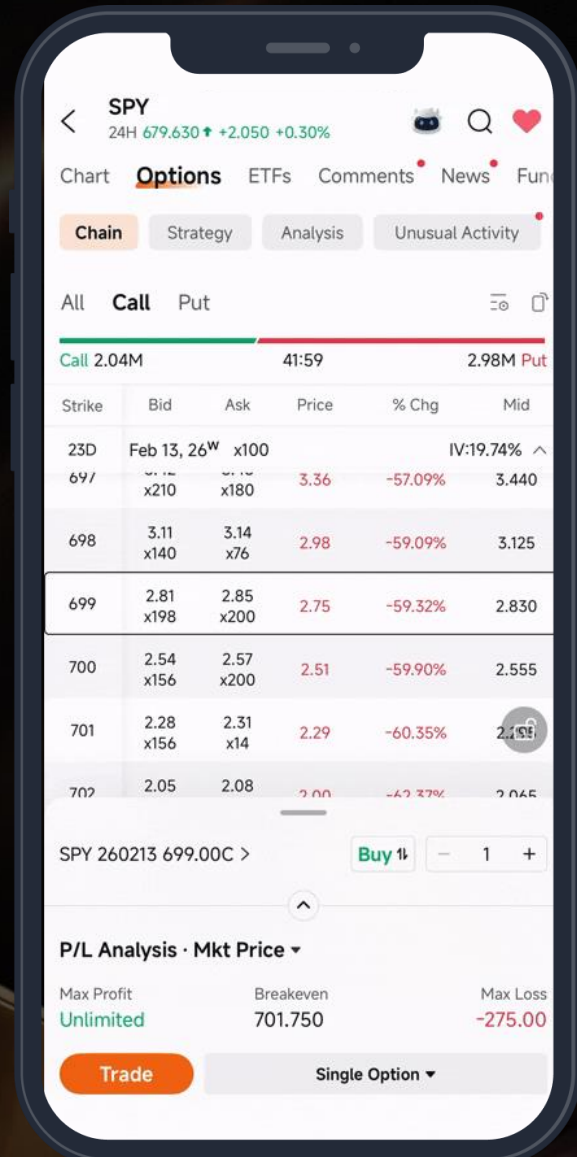


Use Case

Free Real-Time Options Chains

Scenario: "Breaking news just hit the market. I expect a short-term rally heading into Feb 20. With dozens of option contracts available, I need to quickly identify the most suitable strike and price."

Action: Open the Options Chain and filter by the Feb 20 expiry.



P&L Analysis

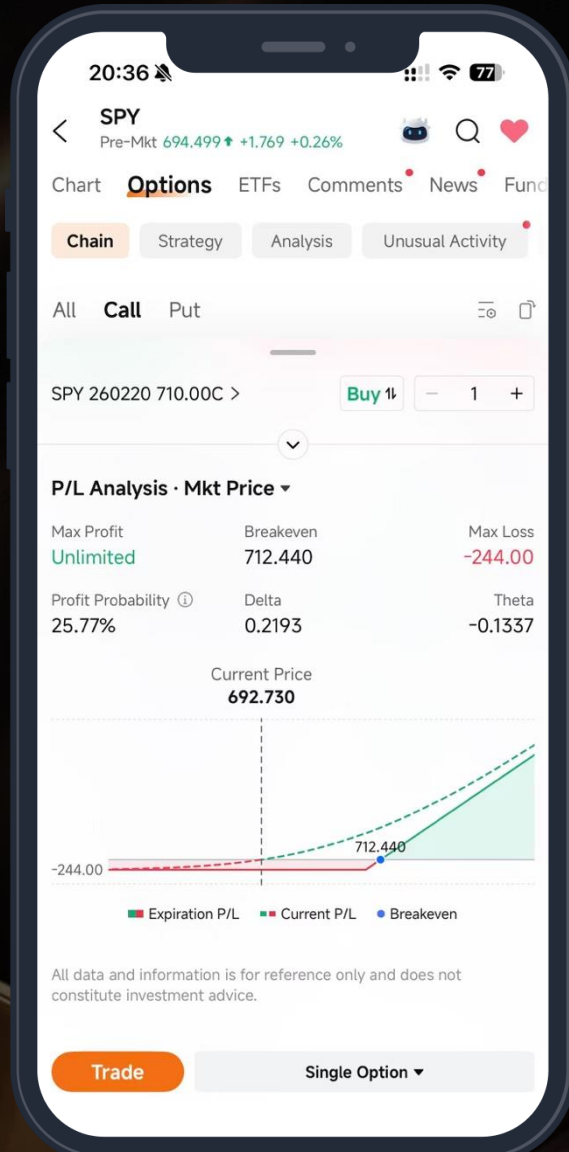
Know Your P&L Before You Trade

Select an option contract to instantly assess its profit and loss potential.

Instantly view Max Profit, Max Loss, Breakeven, and key Greeks like Delta and Theta.

Tap into a single contract to see its full P&L breakdown before placing the trade.

This slide needs to be demo
with moomoo App 📱



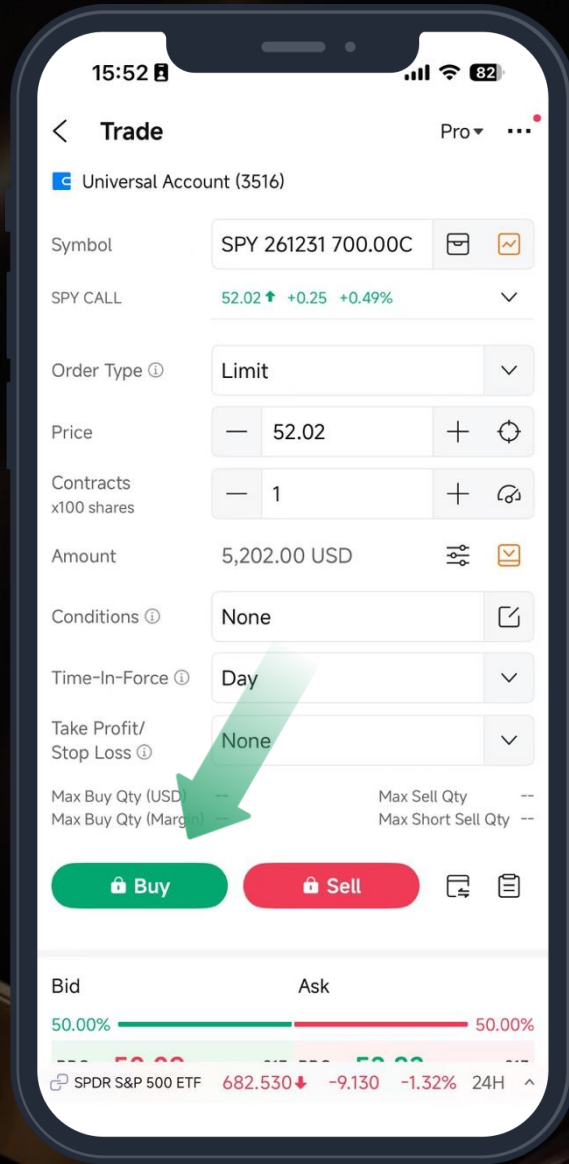
Use Case

P&L Analysis

Know Your P&L Before You Trade

Scenario: "I thought there would be at least a 2% increase on Feb 20, so I found a contract with a strike price expiring at Feb 20, \$710. But I wanted to know how much this contract would give me the max gain, and the possible loss"

Action: Use P&L Analysis to simulate different market scenarios. Drag the price to instantly see potential profit and loss.

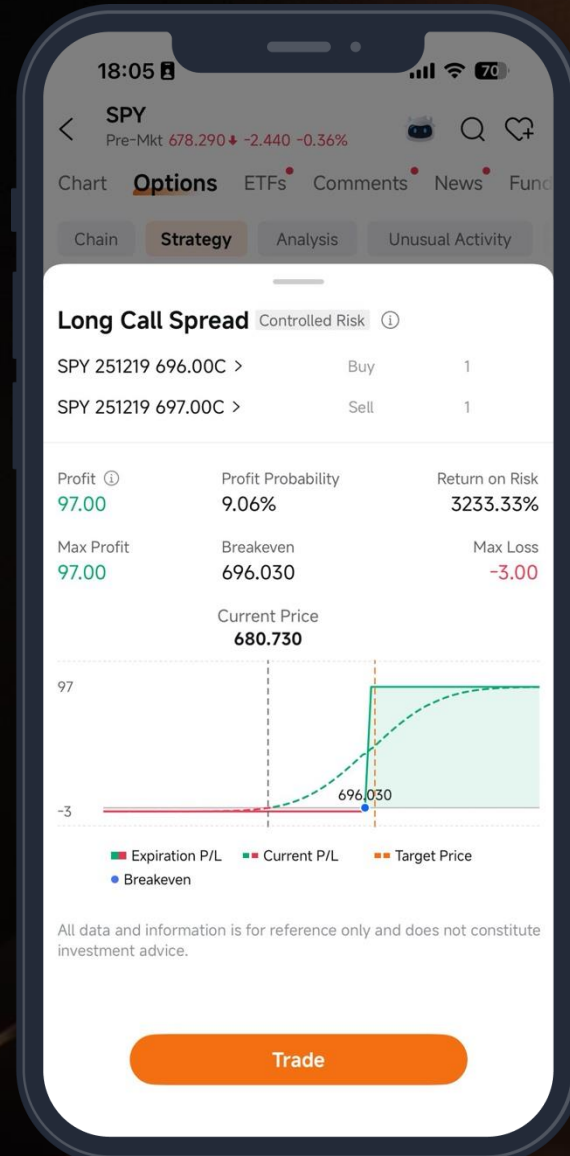
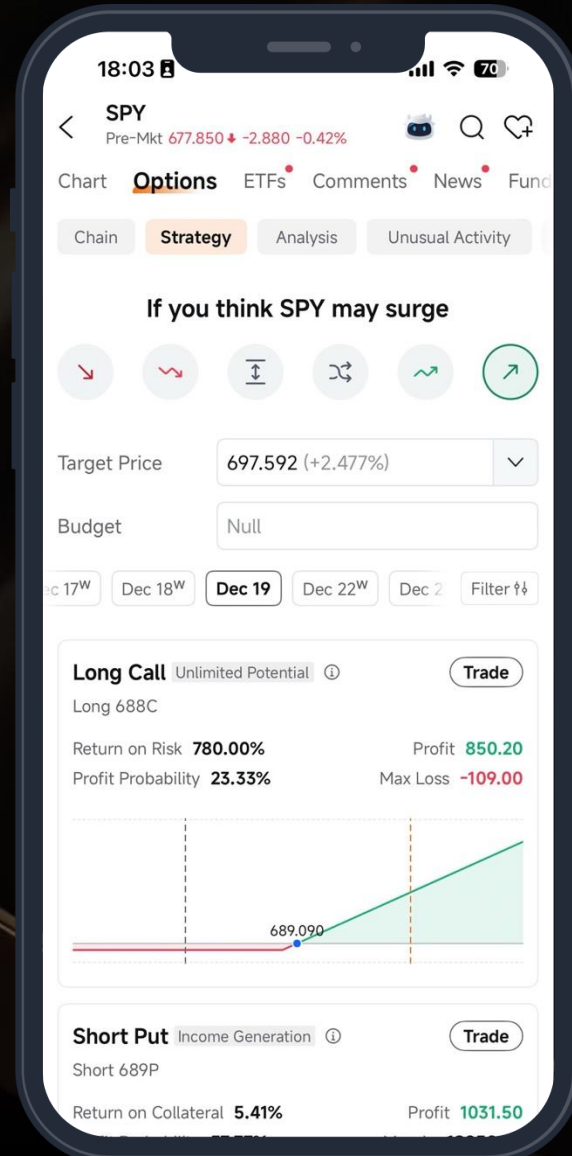


Click "Trade" Button
Place an order



Trade With Ease

From manual complexity to streamlined execution



Strategy Builder

Build professional options strategies with ease

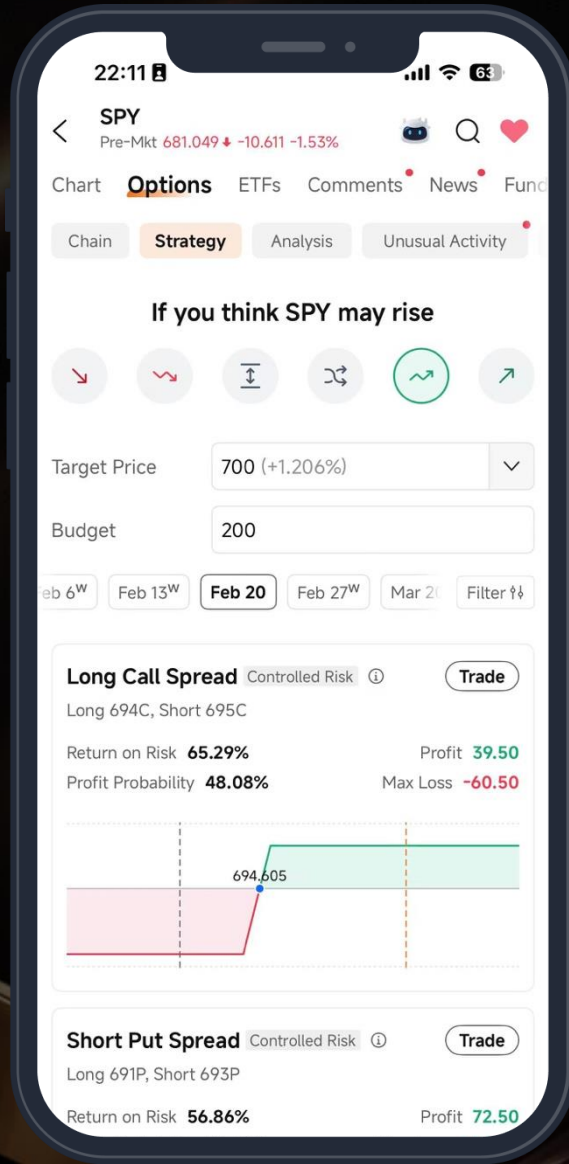
Input your market outlook to receive tailored strategy recommendations

Visualise risk and potential returns instantly with intuitive P&L maps

Execute seamlessly by placing trades directly from the strategy interface

Options → Strategy → Select a market view (Bullish, Bearish, Volatile) to auto-match strategies.

This slide needs to be demo
with moomoo App 📱



Use Case

Strategy Builder

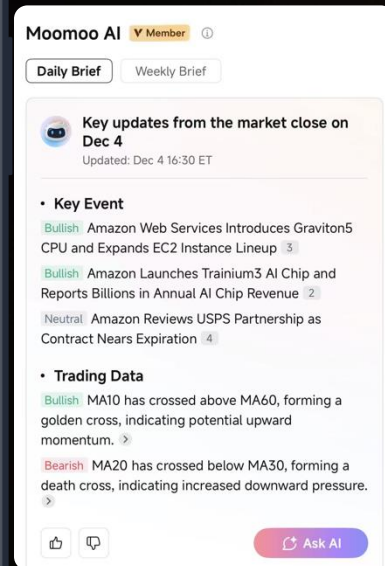
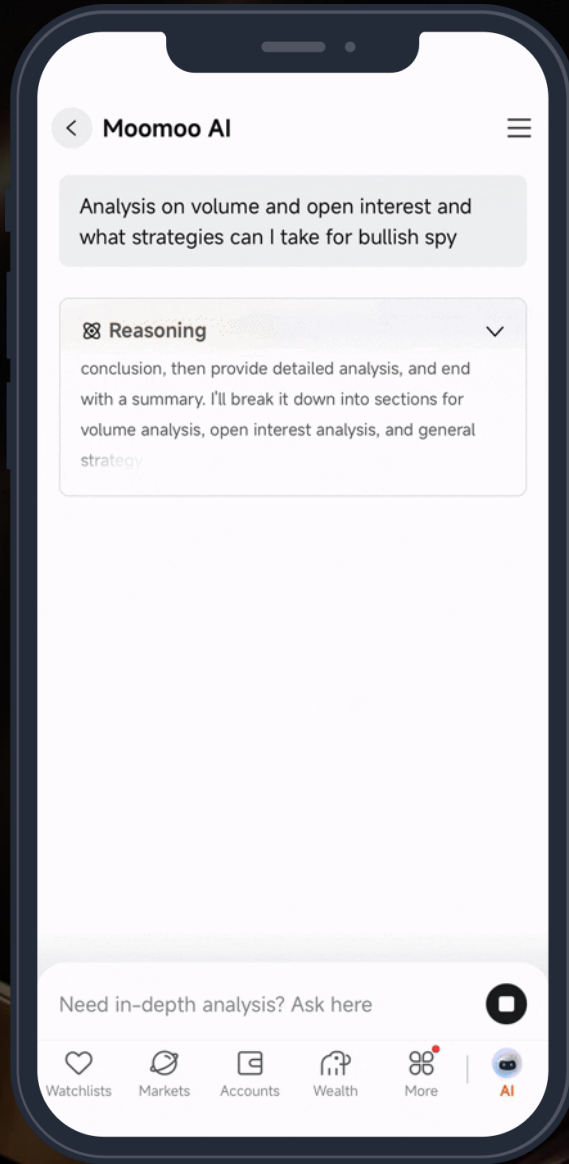
Build professional options strategies with ease

Scenario: "I'm bullish SPY, but should I play it safe or aggressive? And compare to long call, is there any better choice to choose?"

Action: Select "Bullish" or "super bullish" on the Strategy Guide, and input target price and budget, you can get your perfect strategy.

Trade Smart

From manual decisions to AI-powered price and position management



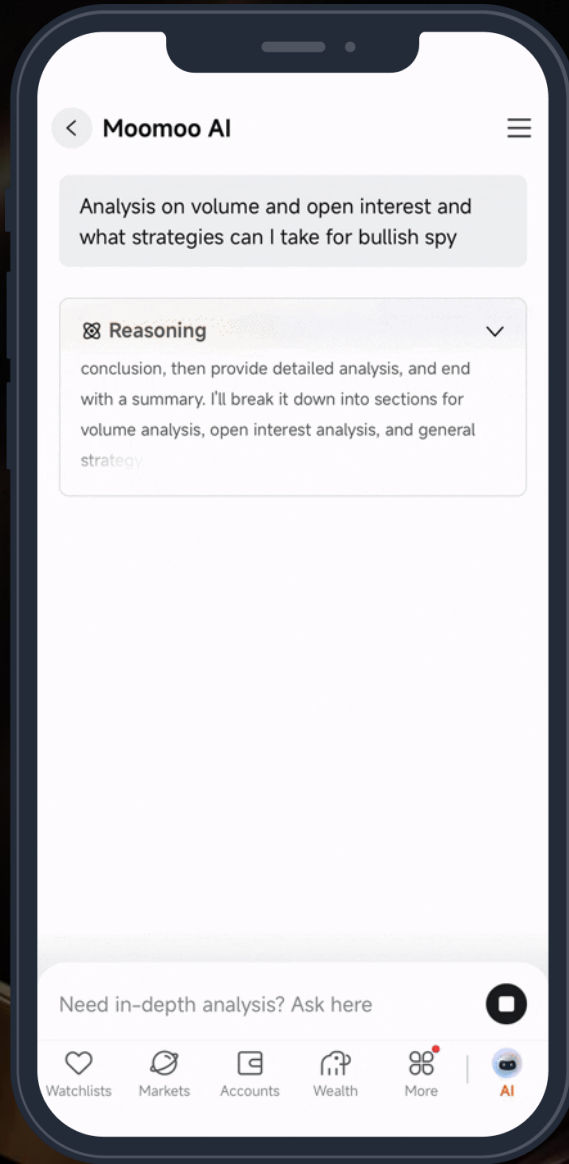
Moomoo AI

Turn market complexity into informed decisions

AI-curated market signals : Automatically surface key events, unusual activity, and sentiment shifts that matter to your trade.
On-demand contract intelligence : Ask AI to break down option risks, Greeks, volume, and open interest — in plain language.
Decision support, not guesswork : Use AI insights to validate your trade thesis, refine entries and exits, and manage positions with greater confidence.

Use Moomoo AI at the bottom of the Quote page for summarized news, earnings, and technical signals.

This slide needs to be demo
with moomoo App 📱



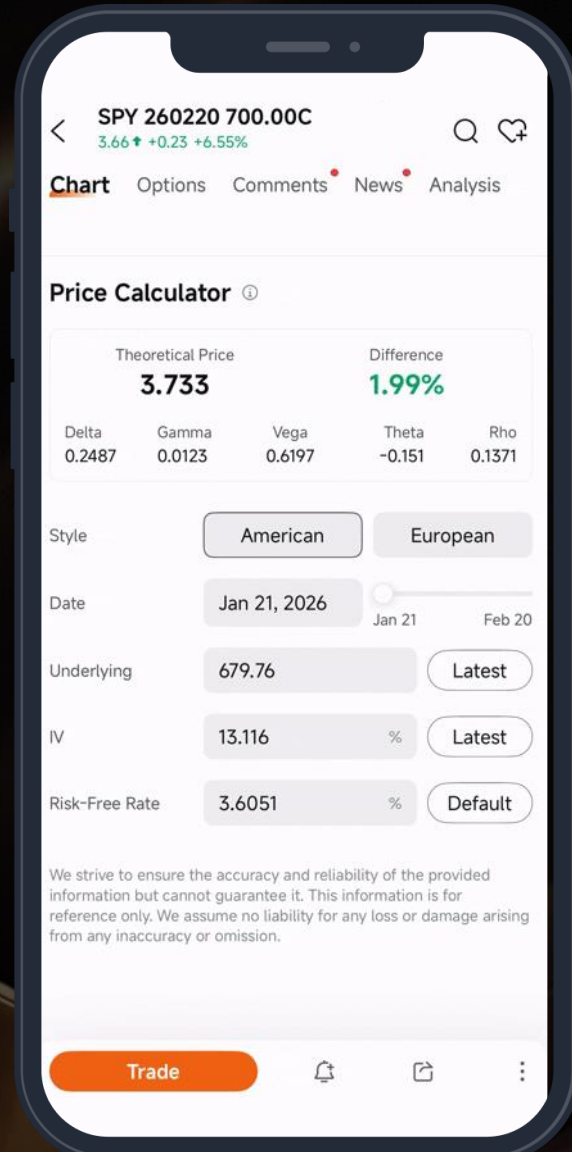
Use Case

Moomoo AI

Turn market complexity into informed decisions

Scenario: "The market is entering a mid-cycle phase and price action is becoming more divergent. Some believe the upside is already priced in. I need to know whether institutional interest is still present and if the risk profile of my option position has changed."

Action: Use moomoo AI to analyse volume and open interest trends. Ask AI to interpret institutional activity and assess how changes in OI, liquidity, and positioning impact the risk and conviction of your option holdings.



Price Calculator

Don't overpay for options — trade at fair value

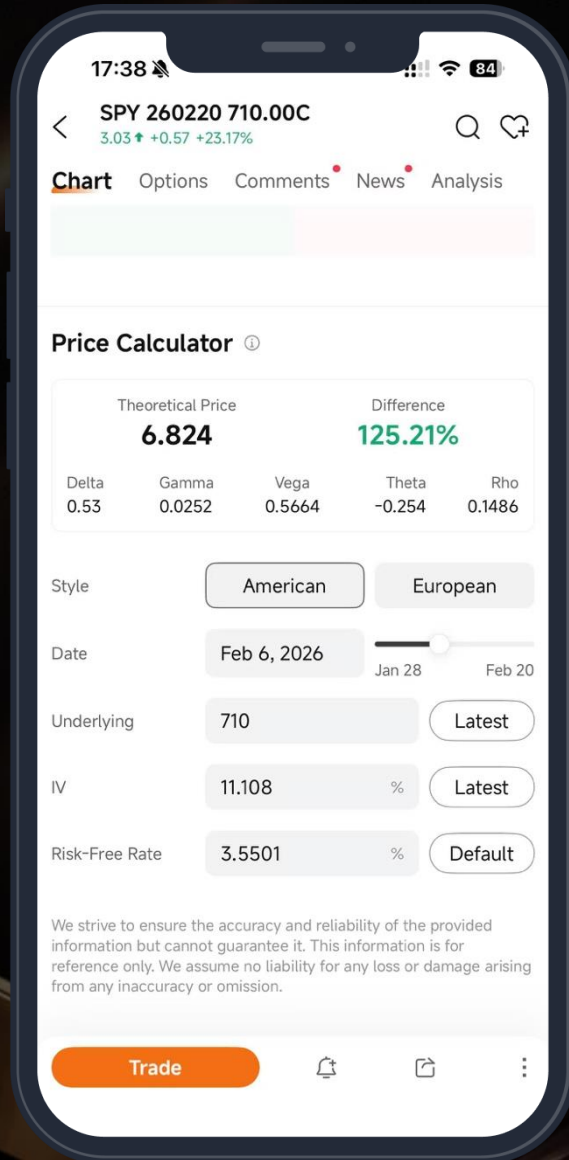
Estimate fair value using theoretical pricing to identify better entry and exit levels

Stress-test your position by adjusting expiry dates and strike prices to spot risks early

Trade with confidence by understanding potential upside and downside before execution

Access the Price Calculator directly from the options contract page.

This slide needs to be demo
with moomoo App 📱



Use Case

Price Calculator

Don't overpay for options — trade at fair value

Scenario: “SPY is trending higher. Should I take profit now, or hold through next Friday? I want to avoid exiting too early without understanding the fair value of my option.”

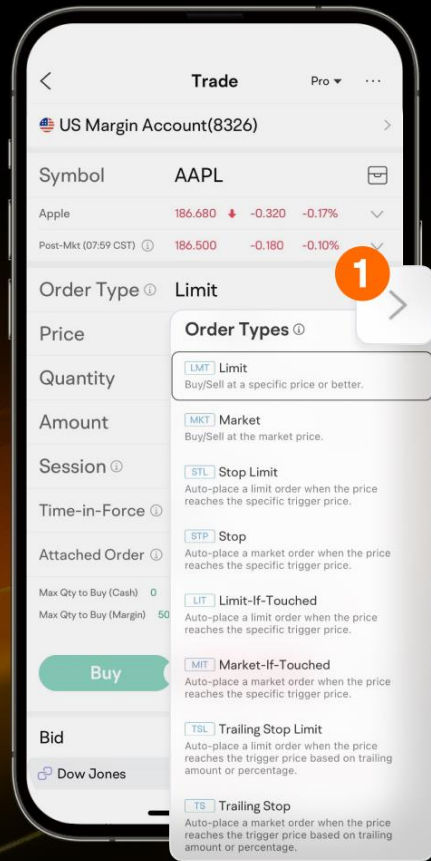
Action: Use the Option Price Calculator to simulate future scenarios. Adjust the expiry to next Friday and increase the underlying price by 2% to 710 to take profit.

Manual vs. Advanced Order Trading



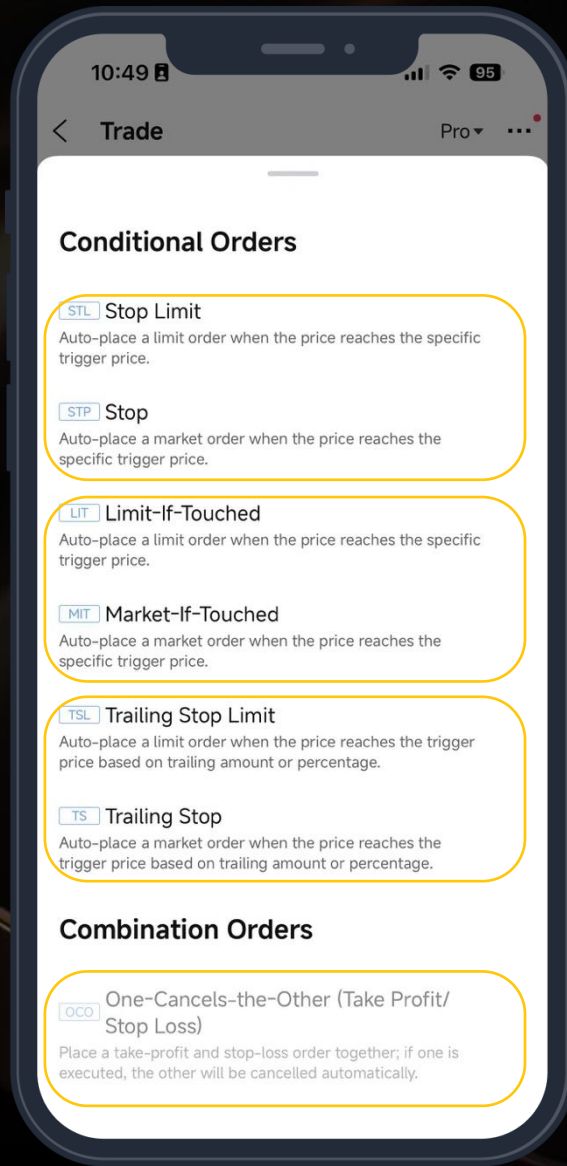
Trade with Precision Facilitate Your Trading with Order Types

Tap on a stock > Order Type and choose between two basic and six advanced order types, helping you place an order with more control, efficiency, and flexibility.



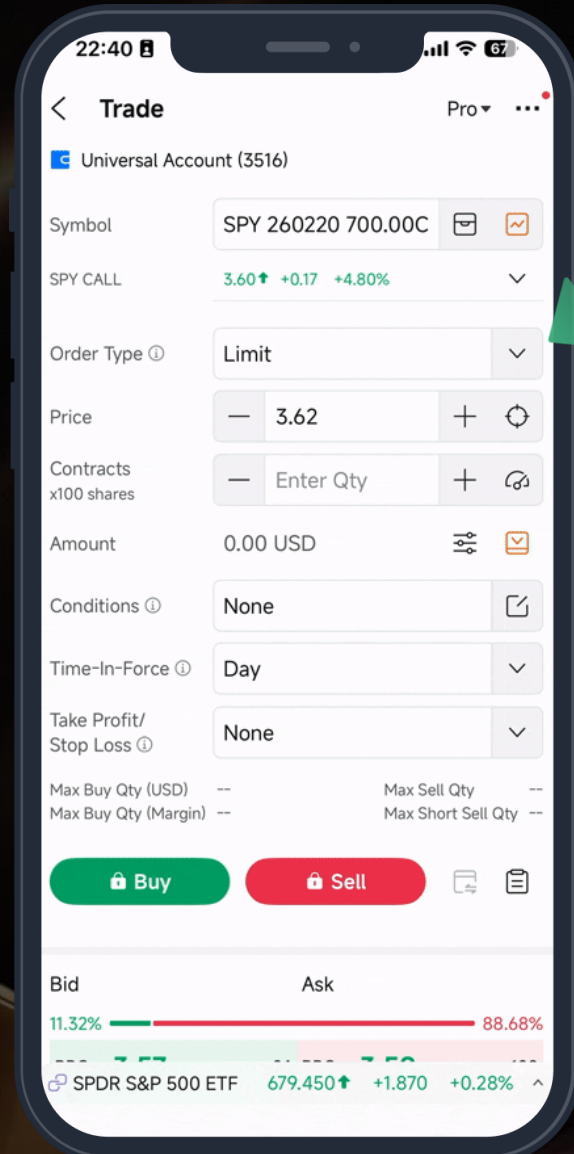
Feature	Manual Trading (Traditional)	Moomoo Advanced Orders
Monitoring	Requires constant screen watching (24/7 stress).	Set and Forget. The system monitors price movements.
Discipline	Vulnerable to emotions (Fear & Greed).	Rule-Based. Executes pre-defined plan automatically.
Reaction Time	Slow human reaction to sudden spikes/drops.	Instant. Triggers immediately when conditions are met.
Risk Management	Often neglected in the heat of the moment.	Pre-calculated and secured before entry.

Moomoo's Order types



Order Type	Trigger Condition	Primary Benefit
Stop Loss	Price \leq Threshold	Minimizes loss / Protects capital
Take Profit	Price \geq Target	Locks in gains automatically
Trailing Stop	Price drops "X" from Peak	Maximizes profit in uptrend
OCO	Either Limit or Stop hits	Handles two-way volatility

This slide needs to be demo
with moomoo App 📱



Use Case

Advanced Orders

Turn your exit plan into automatic execution

Scenario: "I have a clear exit plan "will sell if the price ", but I can't monitor the market all day. I need a way to lock in profits or limit losses automatically if price levels are reached."

Action: Set Limit-If-Touched to take profit based on the calculated result \$6.84.

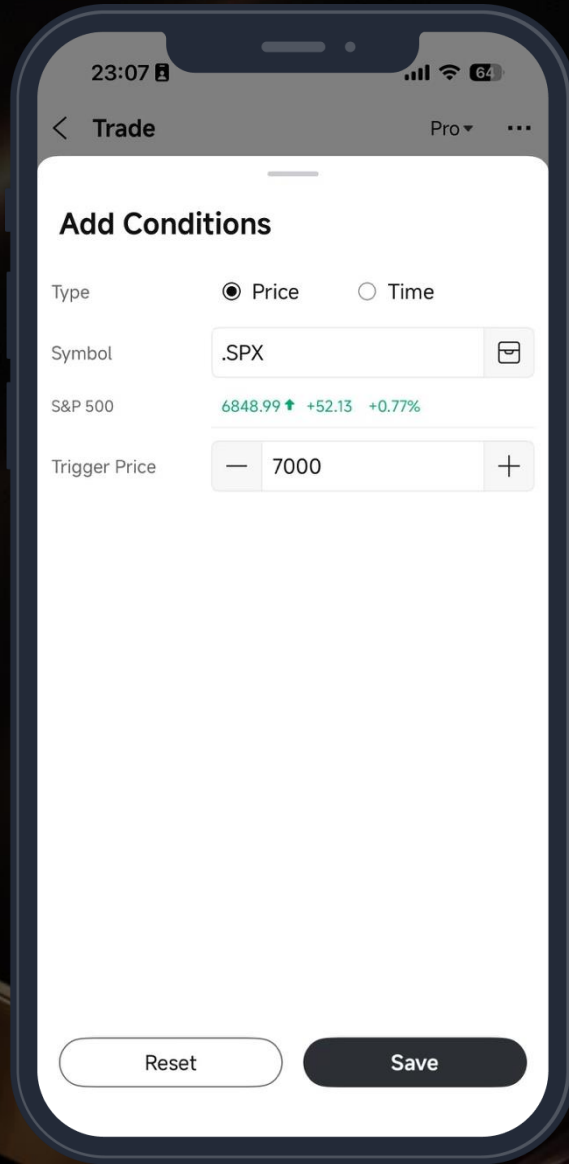
Tigger price: \$6.8

Sell the contract order at: \$6.84

This slide needs to be demo
with moomoo App 📱



MooCreator Day 2026



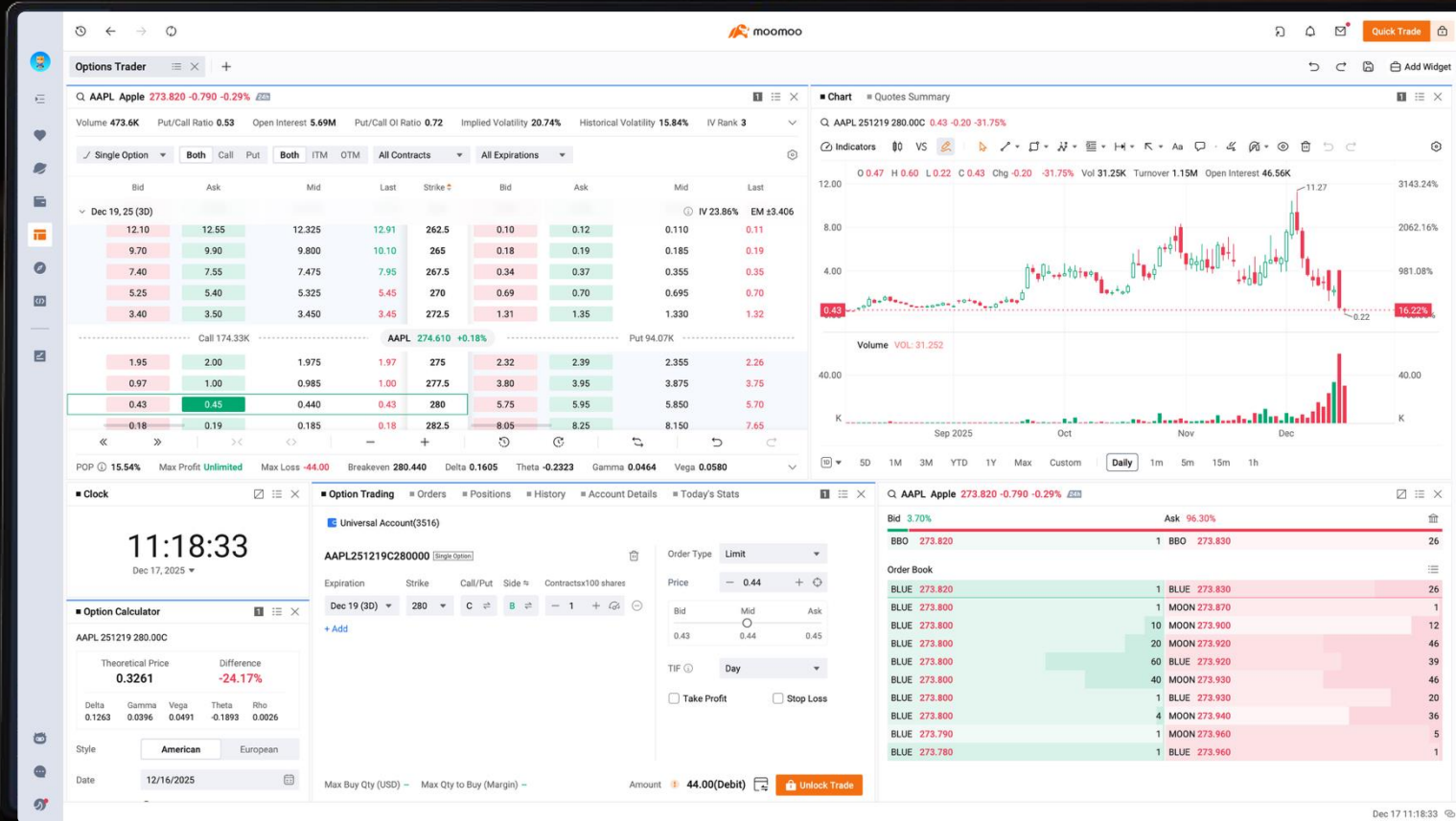
Use Case

Advanced Orders

Turn your exit plan into automatic execution

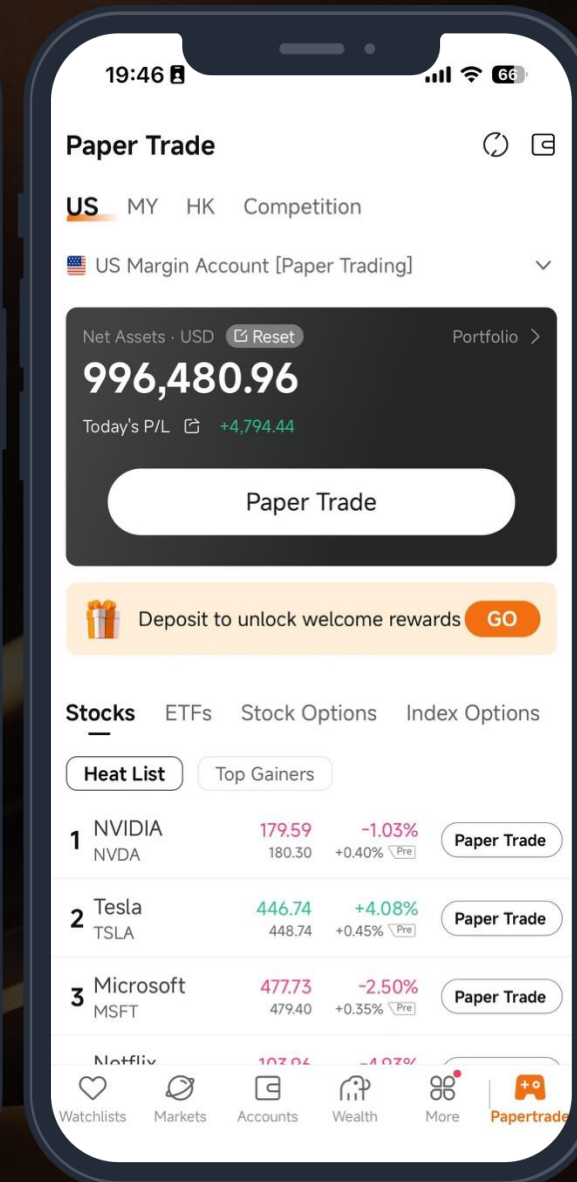
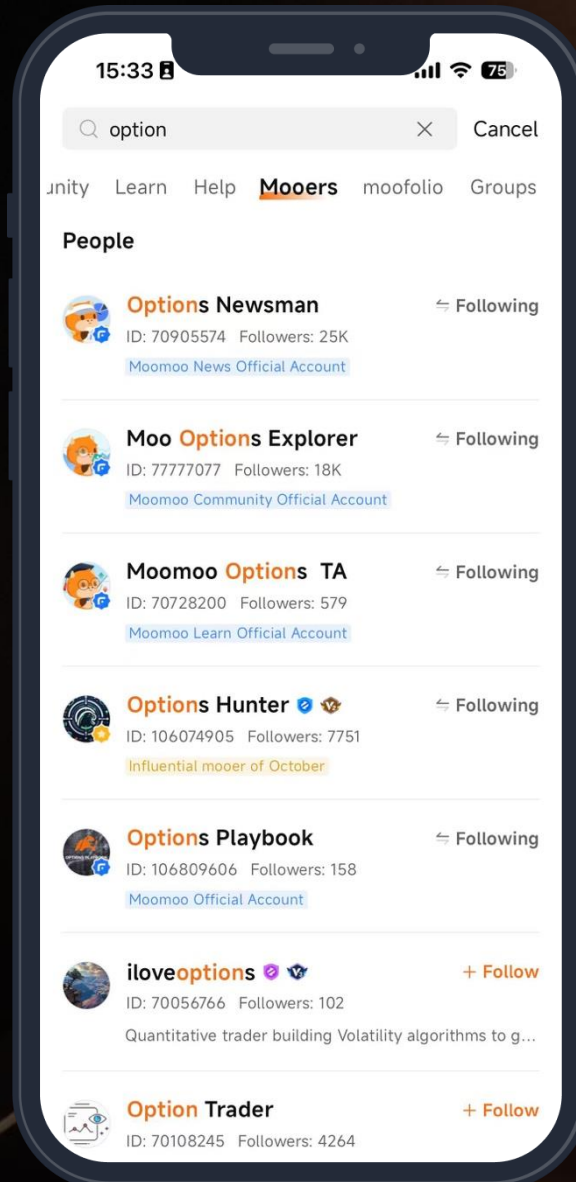
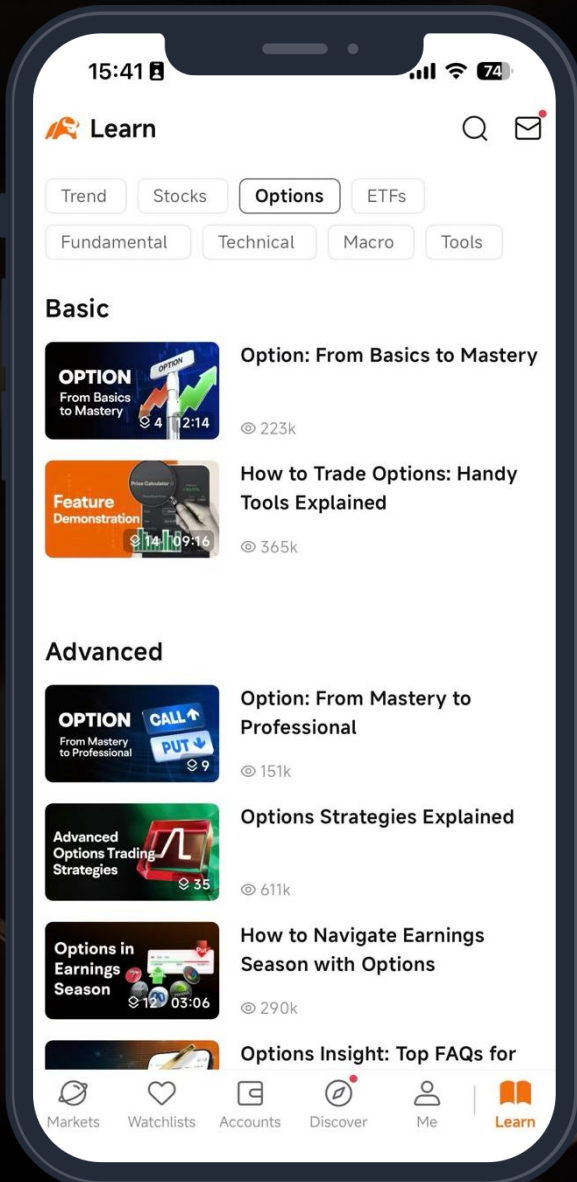
Scenario: “My SPY option is sensitive to broader market moves. Instead of watching SPY alone, I want my exit to be triggered when the S&P 500 index reaches a key level.”

Action: Set a conditional order using the S&P 500 index as the trigger. When the index reaches 7,000, the system automatically sells my SPY option.



Desktop for Option Trading

- **Full Feature Parity with App:** Access the Option Chain, Strategy builder, and AI tools directly on your desktop.
- **Enhanced Readability:** View 20+ contracts and 6 strategy types simultaneously for faster comparison.
- **Customizable Layouts:** Build your own dashboard by adding widgets like Charts, Order Book, and Chain into a single workspace.



Options Courses & Community

Free options video and graphic lessons for all levels; Join 28M global investors to share and grow together.

Paper Trade

Virtual \$1M, practice at zero cost; Real markets, simulate live trades.

Find Opportunity	<ul style="list-style-type: none">• Options Chain• Options Market Overview• Top ODTE Options• Seller Dashboard• Upcoming Earnings
Options Analysis	<ul style="list-style-type: none">• P/L Analysis on Options chain• Option Strategy• Option Calculator• Moomoo AI• Analysis Metrics• Unusual Activity
Trading	<ul style="list-style-type: none">• 13 Combined Margin Options Strategies• Advanced Order Types• Desktop Version• Cheap transaction fees
Learn & Grow	<ul style="list-style-type: none">• Options Courses• Option Community: Official Account & LIVEs

**From spotting opportunities to
mastering skills**

**moomoo – your ultimate
options trading platform.**

Round 3 Challenge Questions

Task 6. Find the answer in moomoo

- 1) Find Nvidia (NVDA) in the Option Chain. Expiration: Feb. 20, 2026. Strike: \$200. Call.
What is the current BBO (Best Bid / Best Offer)?

Round 3 Challenge Questions

Task 6. Find the answer in moomoo

2) Calculate the theoretical value of this call [NVDA 260220 200 C]

When time reaches February 16, and NVIDIA's stock price rises to 200, just hitting the strike price.

Round 3 Challenge Questions

Task 7. Historical Backtest

Scenario: "Let's travel back to Dec 1, 2025. Stock X was at \$240. Over the next month, it rallied to \$255."

Challenge: Which group has the highest Percentage Return (%)?

- A: Bought Stock (100% Cash).
- B: Bought Call Strike \$245 (Slightly OTM).
- C: Bought Call Strike \$220 (Deep ITM).

Correct Answer

B

- Stock: ~6% gain.
- Deep ITM: Moves like stock with some leverage (~20-30%).
- Slightly OTM: As the stock crosses \$245 to \$255, the option goes from "Out-of-the-Money" to "In-the-Money." The premium can explode (e.g., 100%+ gain), offering the highest percentage return (Gamma explosion).

Options Playbook

Master Options with Confidence

- **Fundamentals Made Easy:**
Calls, puts, spreads, volatility, probability — explained with clarity and real-world relevance.
- **Actionable Strategy Walkthroughs:**
See how different strategies can help manage risk, enhance flexibility, or express a market view.
- **Platform-Specific Tutorials:**
Learn how to navigate within the Moomoo app.
- **Market-Relevant Insights:**
Understand how options interact with today's market conditions and trending themes.

